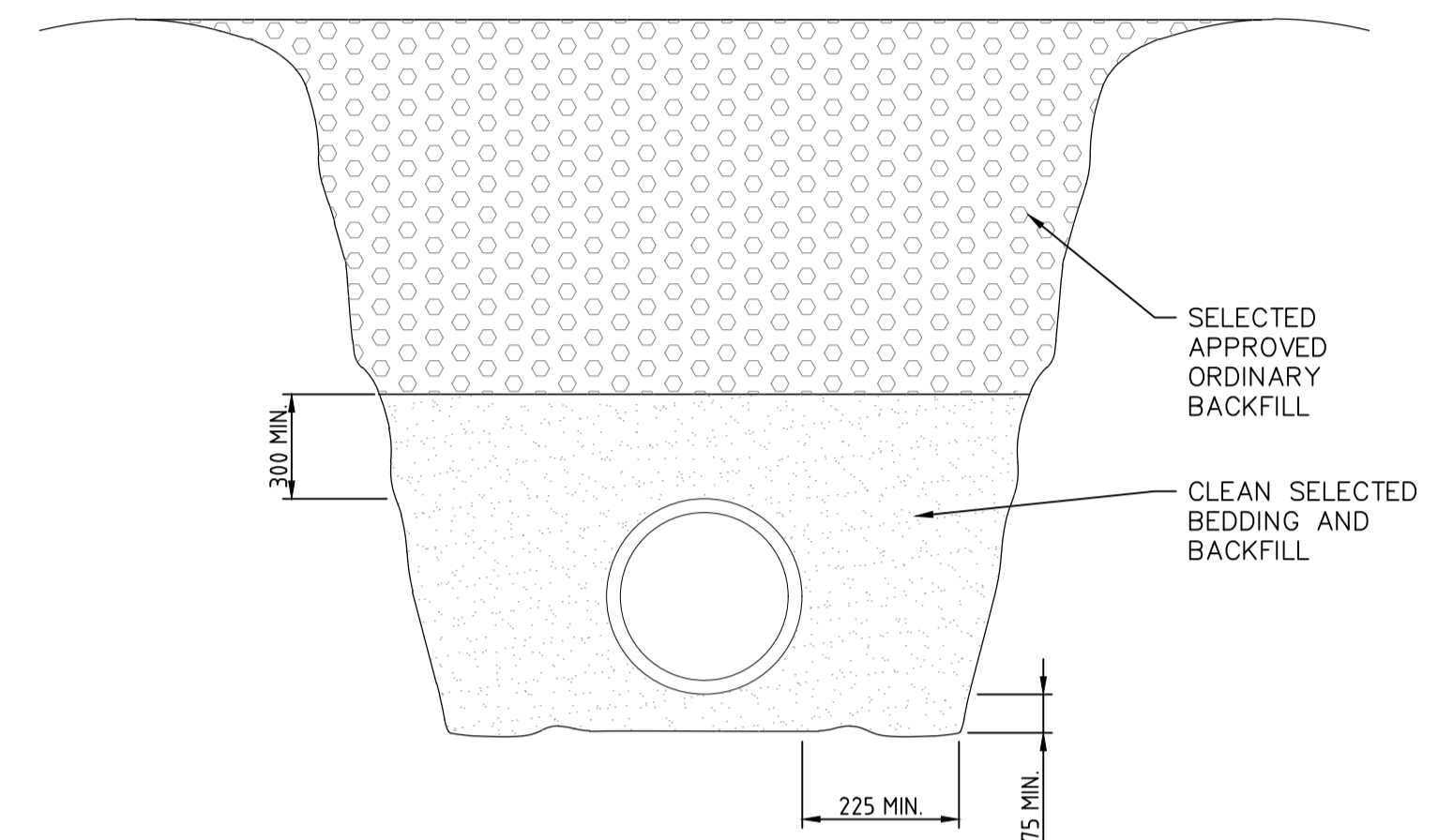
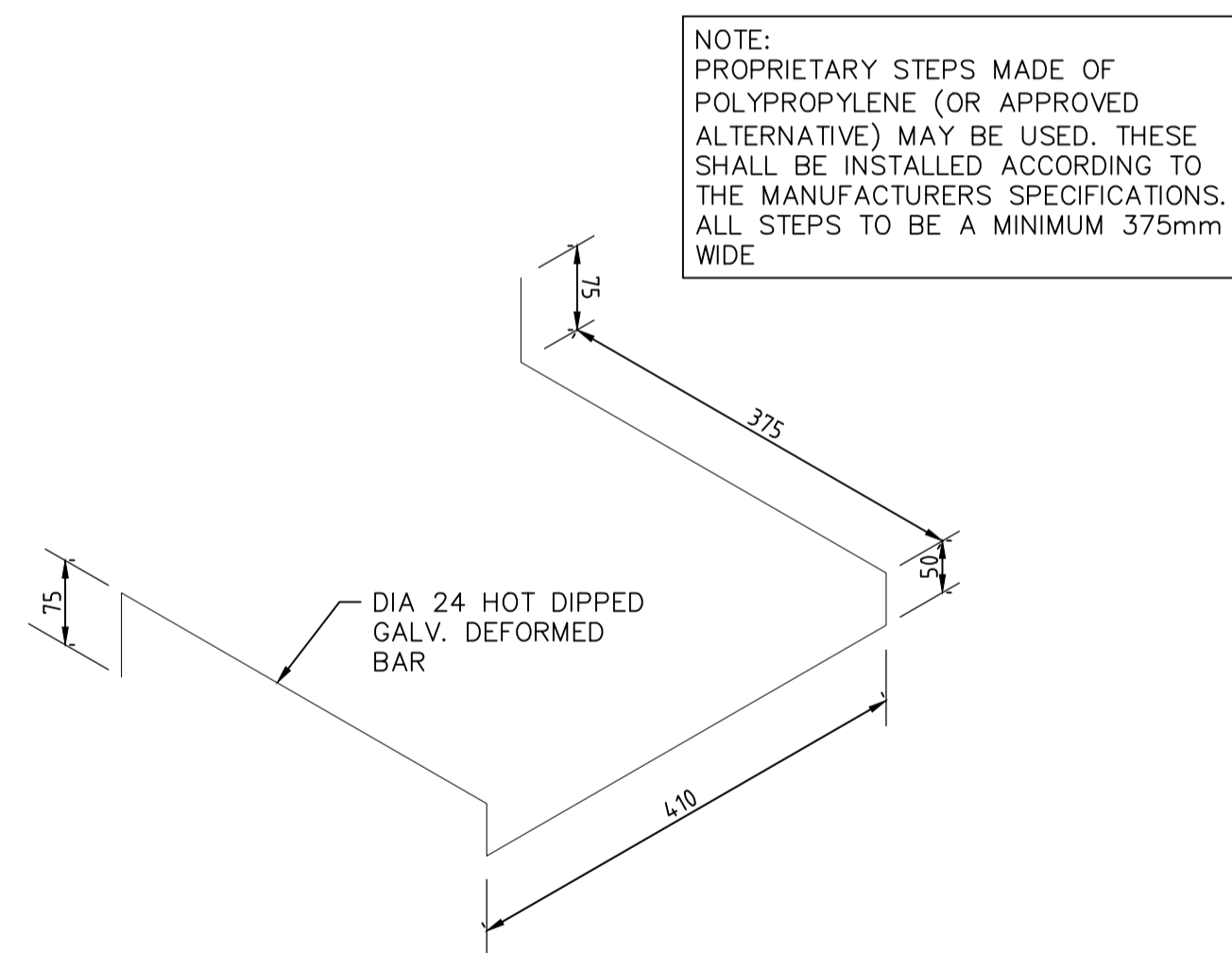


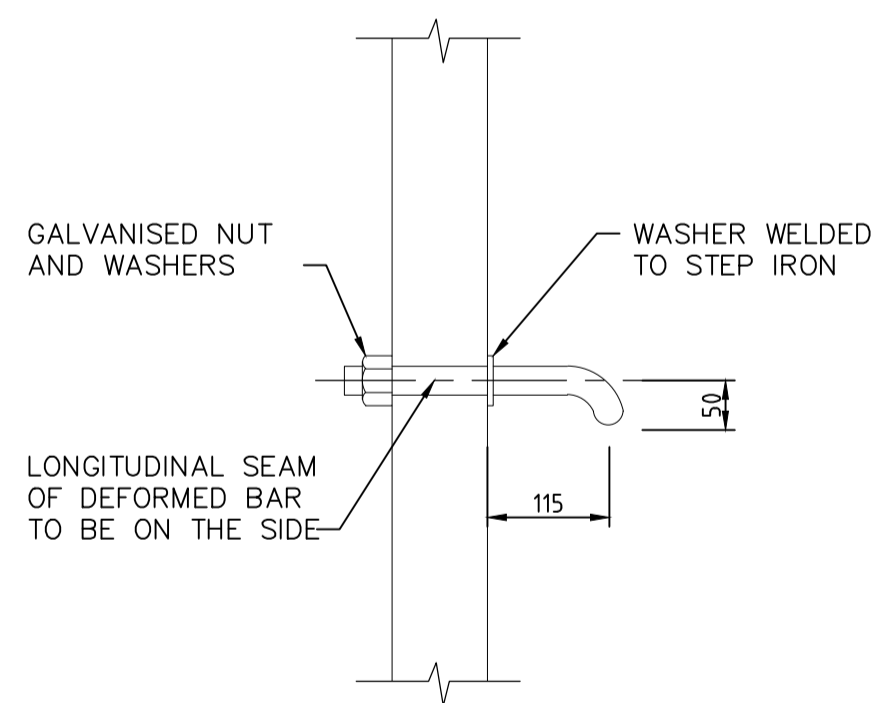
TYPICAL STORMWATER - SEWER CROSSING
N.T.S



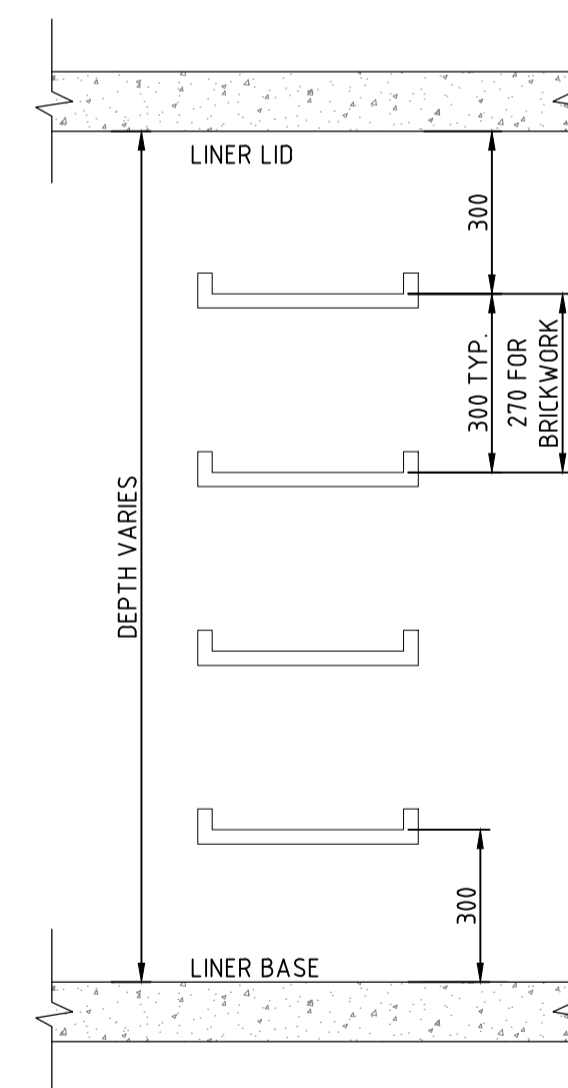
TRENCH DETAILS
N.T.S



DETAIL - STEP IRON
N.T.S



SECTION THROUGH WALL
STEP IRON DETAILS
N.T.S



VERTICAL SPACING
N.T.S

DRAINAGE NOTES :

1. PRIOR TO BACKFILLING THE TRENCH THE AREA SURROUNDING SERVICES SHALL BE CAREFULLY COMPACTED WITH HAND RAMMERS. THE MINIMUM DEPTH OF HAND COMPACTION ABOVE THE TOP OF PIPE SHALL BE NO LESS THAN 150mm.
2. COMPACTION OF THE REMAINING BACKFILL SHALL BE IN 150mm LAYERS. COMPACTION SHALL BE ACHIEVED BY MECHANICAL MEANS WITH WATER TO A DENSITY OF NOT LESS THAN 95% MDD WHEN TESTED IN ACCORDANCE WITH AS1289.5.2.1-1993 OR AT LEAST EQUAL TO THAT OF THE SURROUNDING UNDISTURBED ROAD MATERIAL. CRUSHED LIMESTONE PAVEMENT SHALL BE COMPACTED TO 95% MDD WHEN TESTED IN ACCORDANCE WITH AS1289.5.2.1-1993.
3. ALL DIMENSIONS IN MILLIMETRES
4. MINIMUM CLASS 2 RCP TO BE USED WITH MINIMUM COVER AS PER MANUFACTURERS SPECIFICATIONS.
5. ALL ROAD CROSSINGS WITH LESS THAN 600mm COVER TO BE CLASS 4 RCP.
6. STEP IRONS TO BE INSTALLED IN PITS WHERE THE DEPTH FROM COVER TO TOP OF BASE EXCEEDS 600mm.

Engineering Standard Details DWG - STD-D07 - PIPE BEDDING & STEP IRON DETAILS.dwg

Amendments	No	Date	Issued For	Revision	By	Approved
A	30/11/23	ISSUED FOR REVIEW			BV	NS

Scale	AS SHOWN
Datum	N/A



THIS DRAWING REMAINS THE PROPERTY OF THE SHIRE OF SERPENTINE JARRAHDALE AND SHALL NOT BE RETAINED, COPIED, OR USED, WITHOUT WRITTEN APPROVAL FROM THE DIRECTOR ENGINEERING SERVICES

Drawn	BC	Date	30/11/23	Signet	
Designed	BV	Date	30/11/23	Signet	
Checked	VB	Date	30/11/23	Signet	

Project		SHIRE OF SERPENTINE JARRAHDALE STANDARD DRAWINGS	
Title		DRAINAGE - PIPE BEDDING & STEP IRON DETAILS	
Sheet No.	1 OF 1	Revision No.	A
DWG No.	STD-D07		