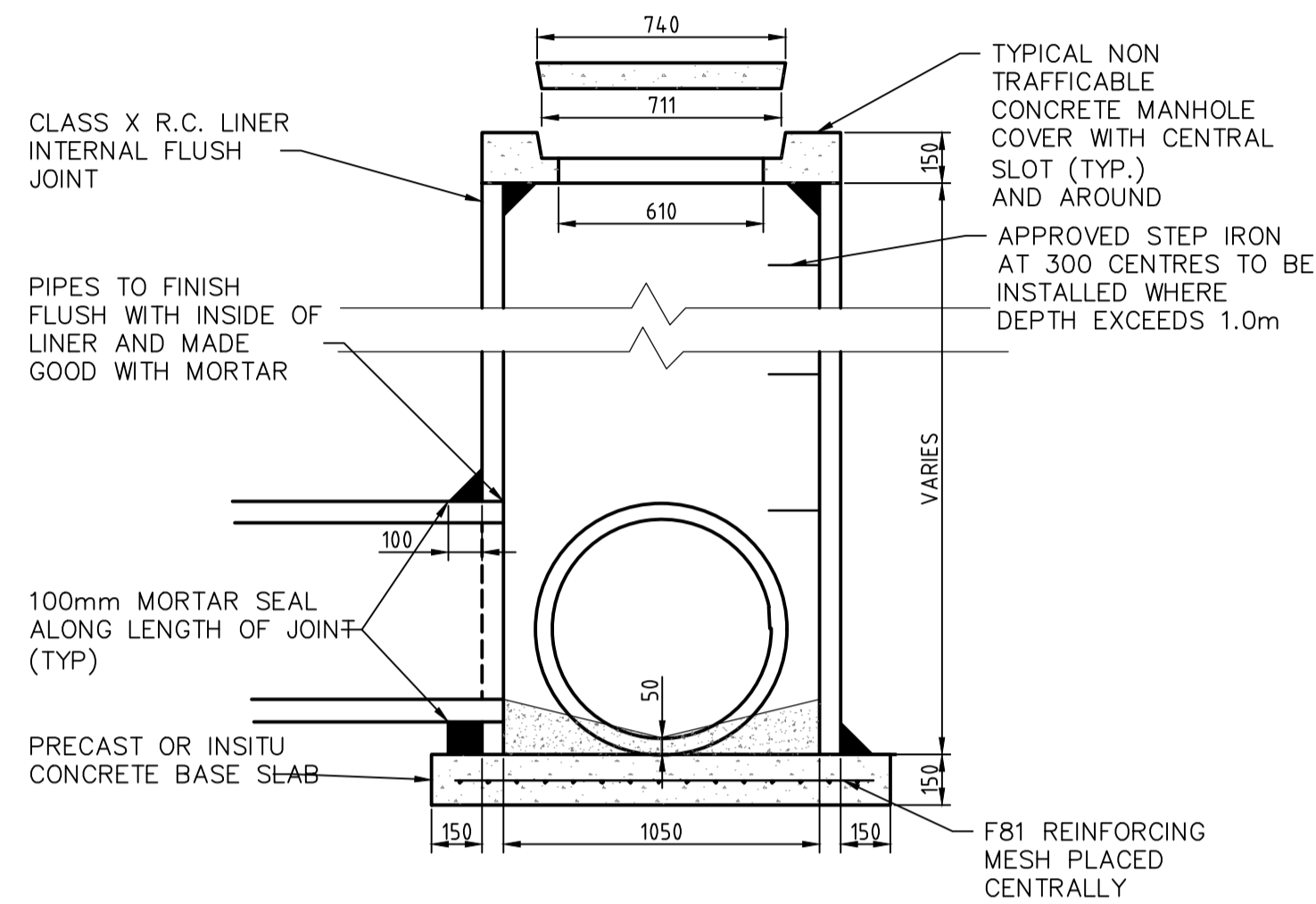
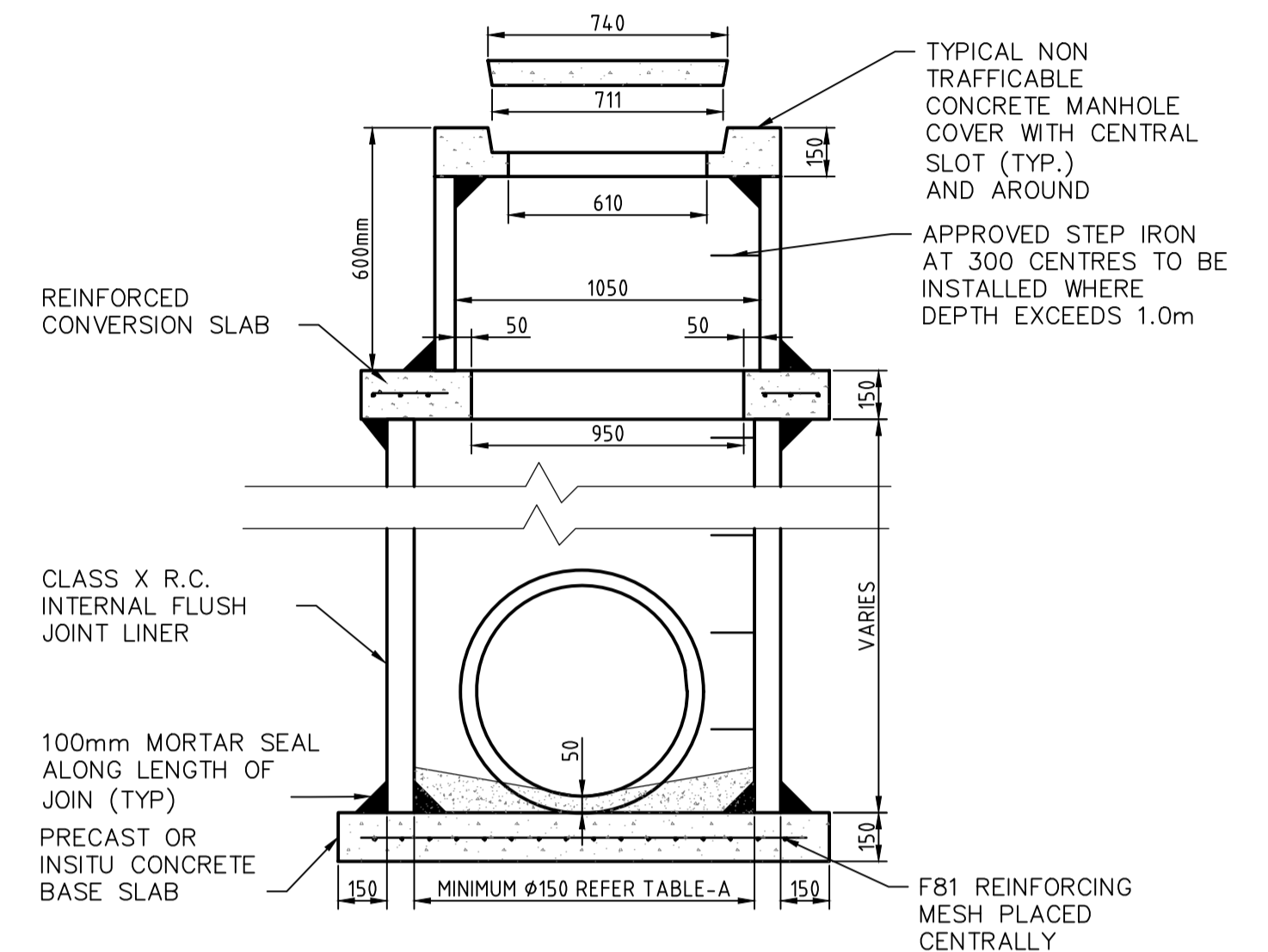


VARIES WITH PIPE SIZES GRATER THAN 750mm DIA

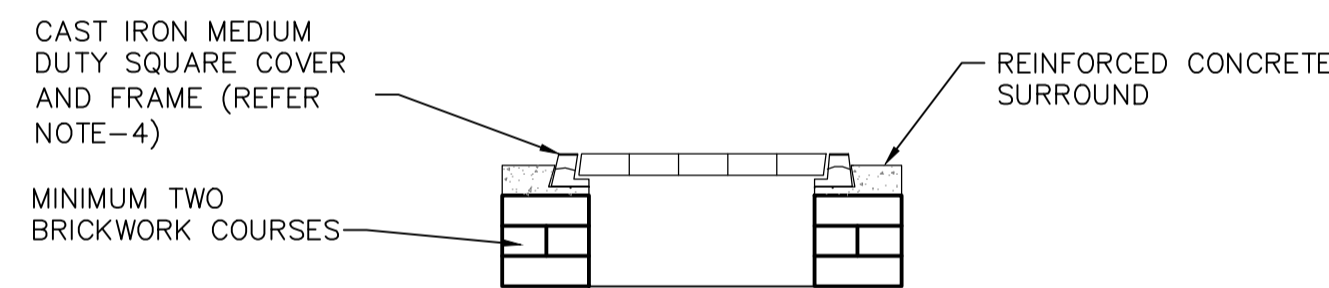
STANDARD BRICK MANHOLE  
N.T.S



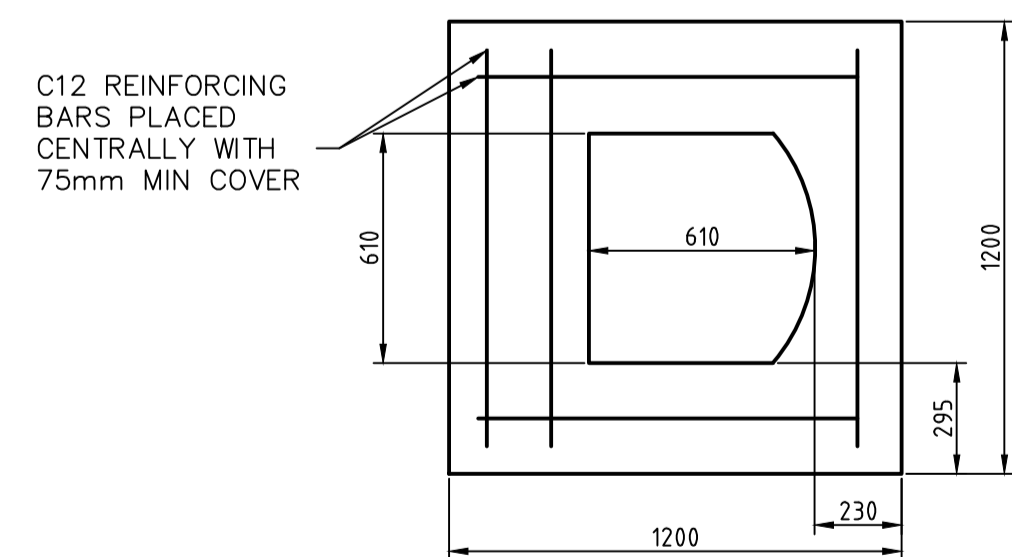
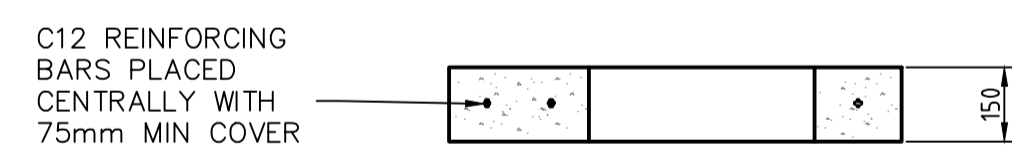
STANDARD LINER MANHOLE  
(225 $\phi$  - 600 $\phi$  THROUGH PIPES)



STANDARD LINER MANHOLE  
(GREATER THAN 600 $\phi$  THROUGH PIPES)



TYPICAL TRAFFICABLE MANHOLE COVER & SURROUND  
N.T.S



CONVERSION SLAB FOR SQUARE GATIC FROM LINER MANHOLE  
N.T.S

TABLE A DRAINAGE PIT LINER SIZE		
NOM. LINER SIZE (mm)	PIPE SIZE MAX. (mm)	LINER TYPE
$\phi$ 1050	$\phi$ 450	CONCRETE
$\phi$ 1200	$\phi$ 600	CONCRETE
$\phi$ 1500	$\phi$ 750	CONCRETE
$\phi$ 1800	$\phi$ 900	CONCRETE
FOR PIPES $\phi$ 1200 AND LARGER INSTALL A CUSTOM CHAMBER TO SUIT.		

NOTES:

- ALL DIMENSIONS ARE IN MILLIMETRES UNLESS STATED OTHERWISE.
- ALL CONCRETE TO BE IN ACCORDANCE WITH AS3600-1994, 20MPa AT 28 DAYS
- WHERE MANHOLES ARE CONSTRUCTED IN ROAD PAVEMENT, A CONVERSION SLAB SHALL BE USED TO BRING THE OPENING BACK TO A 610x610 OPENING WITH A MINIMUM OF TWO COURSES OF BRICK WORK UNDER COVER AND SURROUND
- WHERE MANHOLES ARE CONSTRUCTED IN ROAD PAVEMENT A TRAFFICABLE LID SHALL BE FITTED. TRAFFICABLE LID TO CONFIRM TO AS3996.
- MORTAR SHALL BE 4 SAND : 1 CEMENT.
- IN WET CONDITIONS MANHOLE SHALL BE CONSTRUCTED IN BRICK TO TOP OF OUTLET PIPE
- ALL MANHOLES TO BE SEALED TO PREVENT WATER INFILTRATION.
- ALL PRECAST CONCRETE COMPONENTS TO BE APPROVED MANUFACTURER.
- A MAXIMUM OF THREE PIPE OPENINGS ARE ALLOWED IN ANY ONE PIT. A MINIMUM WALL WIDTH OF 250mm IS ALLOWED BETWEEN HOLES CUT FOR PIPE OPENINGS.

Engineering Standard Details DWG: STD-D12 - STANDARD MANHOLE DETAILS.dwg

Amendments	No	Date	Revision	By	Approved
B	05/02/26	TABLE A UPDATED. NOTE 9 ADDED			
A	30/11/23	ISSUED FOR REVIEW		BV	NS

Scale	AS SHOWN
Date	N/A

THIS DRAWING REMAINS THE PROPERTY OF THE SHIRE OF SERPENTINE JARRAHDALE AND SHALL NOT BE RETAINED, COPIED, OR USED, WITHOUT WRITTEN APPROVAL FROM THE DIRECTOR ENGINEERING SERVICES

Drawn	BC	Date	05/02/26	Signed	
Checked	BC	Date	05/02/26	Signed	
Checked	VB	Date	05/02/26	Signed	

**SHIRE OF SERPENTINE JARRAHDALE  
STANDARD DRAWINGS**

**DRAINAGE - STANDARD MANHOLE DETAILS**

Sheet No: 1 OF 1  
Revision No: B  
DWG No: STD-D12