

**Draft**

# **Community Safety and Crime Prevention Plan 2023 - 2027**

## Community Safety and Crime Prevention Plan 2023 – 2027 - DRAFT

### Contents

- Shire President Message
- Introduction
- How to read the plan
  
- SECTION ONE: Background
  - What is community safety and crime prevention?
  - Purpose of the Plan
  - Strategic Alignment
  - How we developed the plan
  - How we will use the plan
  
- SECTION TWO: Where are we now?
  - Highlights of Community Safety and Crime Prevention Plan 2020-2023
  - Existing services and initiatives
  - External partners
  - Community profile
  - Crime Statistic Analysis
  - Community Safety Perception Survey results
  - Markyt community scorecard results
  
- SECTION THREE: Looking forward
  - The role of Local Government
  - The role of the community
  - Priorities for 2023-2027
  - Objectives, actions and measuring our success

(Shire President message)

DRAFT

## **Introduction**

The Shire of Serpentine Jarrahdale's vision is 'City living, offering a rural lifestyle with abundant opportunities for a diverse community.'

Community Safety and Crime Prevention has been identified as one of the highest priorities for the community, according to the 2022 Markyt Community Perceptions Scorecard.

As one of the fastest growing local governments, it is imperative that we develop strategies to reduce crime and promote a safe, vibrant, inclusive, and connected community in the Shire of Serpentine Jarrahdale.

## **How to read this plan**

Section One: Background and plan development explains how the plan was developed and its purpose.

Section Two: Outlines the highlights and achievements of the previous Community Safety and Crime Prevention Plan 2020-2022, and the Shire's current approach to crime prevention and community safety. It explains the existing partnerships in place, and the whole community approach to community safety and crime prevention.

Section Three: Explains the priorities that have been identified, and how they will be addressed throughout 2023-2027, including the actions the Shire will take to achieve the desired outcomes.

DRAFT

## SECTION ONE: BACKGROUND

### What is community safety and crime prevention?

*Community Safety* is defined as the ability for people to go about their daily life with little fear, risk of harm, or injury. Being safe and feeling safe, enables people to participate in community life, to feel included and to have a sense of belonging.

*Crime Prevention* aims to deter or reduce criminal activity by recognising risks and removing or reducing the opportunity for crime to occur.

It is important for people to feel safe in the Shire of Serpentine Jarrahdale. The perception of safety can have a major impact on a person's quality of life, and interaction within the community. We all have a role to play in community safety and crime prevention.

### Purpose of the plan

The Community Safety and Crime Prevention Plan 2023-2027 considers both the perception of crime through community engagement surveys, as well as reported crime, using statistical data from WA Police. The plan includes existing services and strategies, and identifies opportunities to further enhance community safety, and reduce crime.

The plan proposes the following three key priorities:

- Safer Streets and Spaces
- Increase Education and Awareness of Community Safety and Crime Prevention
- Build a Connected, and More Resilient Community

### Understanding the priorities, objectives, and actions

**Priorities** – These are the overarching areas of concern that the plan aims to address.

**Objectives** – A series of objectives sit under each priority area and have been developed using the research mentioned above, that targets both reported crimes and the perception of crime and community safety.

**Actions** – These are the action items for each objective, that demonstrate in practical terms, how each objective will be achieved.

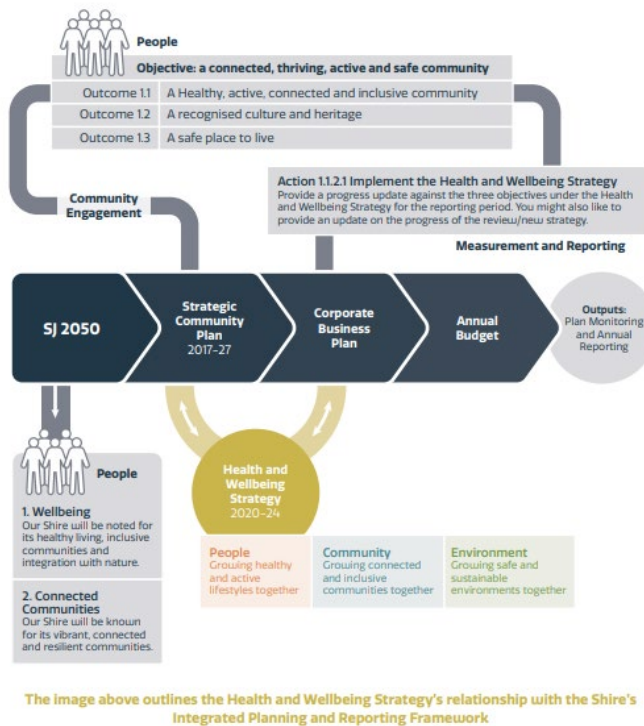
**Key Partners** – Identifying the key partners involved, helps to determine areas of collaborative approach, to target specific objectives.

### Strategic Alignment

- People: a connected, thriving, active and safe community
  - A safe place to live
  - A healthy, active, connected, and inclusive community
- Outcome 1.3: A safe place to be
  - Strategy 1.3.3 Enhance community safety

Community feedback shows strong focus on a family friendly community with positive neighbourly engagement. The relaxed country lifestyle is the most valued quality of the area, with a desire to maintain, and increase where possible, the level of safety.

(insert graphic showing where the plan fits into the strategic plan – example below)



## How we developed the plan

The Community Safety and Crime Prevention Plan 2022 – 2027 has been developed using:

- Research into WA Police crime statistics for the period 2017-2023
- Results of Shire of Serpentine Jarrahdale Community Safety Survey 2021
- Shire of Serpentine Jarrahdale Community Perceptions Survey 2022
- Consultation with key stakeholders including WA Police and Neighbourhood Watch
- Peel Away the Mask 3 Report and Action Plan 2022-2032
- Previous community safety initiatives delivered by the Shire

From this research, key strategic priority areas were identified, and action items have been developed to address each area of concern.

## How we will use the plan

The aim of the Community Safety and Crime Prevention Plan is to guide crime prevention initiatives for Local Government, local community groups and key government agencies in collaboration with the local community to improve community safety. It is designed to be a flexible and versatile document to guide planning, and to cater for the changing needs of the community over the next five years.

As a result of community consultation, the Plan will be a useful tool that can be used by various stakeholders to develop future project opportunities and seek funding for them.

## **SECTION TWO**

### **Highlights**

<p><b>Objective 1:</b> Promote safe driving</p>	<p>(a) Keys for life initiative have been embraced by both Court Grammar and Byford Secondary College</p> <p>(b) Local residents and businesses have been encouraged to display “Slow Down Consider our Kids” bin stickers throughout the Shire of Serpentine Jarrahdale</p>
<p><b>Objective 2:</b> Promote safer communities</p>	<p>(a) eWatch subscribers list has been increased by 170 in the last 12 months</p> <p>(b) Shire of Serpentine Jarrahdale participation and partnering in joint crime prevention projects with Community Safety Officers from the Cities of Armadale, Canning, South Perth, Gosnells, Belmont and the Town of Victoria Park and WA Police Community Engagement employees.</p> <p>(c) In partnership with the local Neighbourhood Watch group, the Shire has participated in multiple community events, and run community focussed street meets via the BBQ series.</p>
<p><b>Objective 3:</b> Support families, children, and young people</p>	<p>(a) Promotion of key early years and parenting group activities including Play in the Park, Circle of Security, Youth Fest and the establishment of an Interagency Network</p> <p>(b) Youth programming offered during school term and school holidays</p> <p>(c) Active promotion and administration of KidsSport applications for the Shire</p> <p>(d) Collaboration with key early years groups to deliver evidence based social development programs</p> <p>(e) Provide general grants to assist community groups to deliver free events such as Christmas breakfasts, fairs and milestone celebrations</p>
<p><b>Objective 4:</b> Address alcohol and other drug misuse</p>	<p>(a) Grant received from WA Police to conduct Side-Effects Drug Education Program to local secondary school students</p> <p>(b) Quarterly meetings held with Youth Officers, local agencies and school staff</p>
<p><b>Objective 5:</b> Promote safe physical environments</p>	<p>(a) The Shire continues to work with developers and business owners to encourage the inclusion of CPTED (Crime Prevention Through Environmental Design) principles</p>
<p><b>Objective 6:</b> Educate families and local stakeholders about bush fire risk</p>	<p>(a) Bush Fire Awareness Group attends weekly markets to promote My Bush Fire Plan</p> <p>(b) Department of Fire and Emergency Services (DFES) have created a My Bush Fire Plan App for roll out</p>

## Existing Services and Initiatives

*The Shire provides several services and initiatives that are 'business as usual'. Services include multiple departments throughout the organisation.*

<b>Connected Neighbours</b>	The Shire holds multiple large-scale events throughout the year, as well as smaller local events such as community BBQ's to encourage community connection, and a sense of belonging. The Shire also currently provides a friendly neighbours grant, offering residents up to \$250 to hold their own street event to encourage neighbourliness and help to build a connected community.
<b>CCTV</b>	The Shire manages over 50 fixed CCTV cameras, and 15 mobile units that are deployed at targeted locations. Footage is made available to WA Police on request to assist with investigations.
<b>Collaborations with agencies</b>	The Shire contributes to the monthly newsletter eWatch. eWatch is a WA Police initiative and is managed by Mundijong Police. The Local Government South East Metro Network consists of community officers from the City of Gosnells, City of Armadale, Town of Victoria Park, City of Belmont, and City of Canning as well as other government agencies including WA Police.
<b>Community Development</b>	The Community Development team works with local community groups and external agencies to contribute to the community and collaborate on key projects throughout the year. The initiatives include early intervention programs and increased accessibility and affordability of activities for families, children, and youth.
<b>Community Safety</b>	The Shire employs a Community Safety Officer within the Rangers and Community Safety team. Their role is to help coordinate and implement strategies and initiatives to contribute to the safety of the community.
<b>Crime Prevention Through Environmental Design (CPTED) Principles</b>	Home safety audit checklists are available on the Shires website, as well as property marking tools from the Shire office. The Shire considers CPTED principles during planning stages of new developments and a Local Planning Policy for Designing Out Crime is in place.
<b>Emergency Management</b>	Fire break inspection and compliance; gaining compliance through education. Bushfire Awareness education – promotion of property fire mitigation and having a bushfire ready plan. The Local Emergency Management Committee (LEMC) is a working group established by the Shire to assist in developing local emergency management arrangements.
<b>Eyes on the Street</b>	The Shire continues to support the Eyes on the Street program, and encourages staff to report anything suspicious.
<b>Facilities</b>	Strict terms and conditions are in place for hirers of Shire facilities including noise compliance, liquor policy and permits, age restrictions. Events considered high risk (18 <sup>th</sup> and 21 <sup>st</sup> birthdays) require additional conditions to be met.
<b>Graffiti Removal</b>	The Shire actively removes graffiti on council property, and encourages and promotes the reporting of graffiti online. The Shire website contains links to graffiti resources.
<b>Health</b>	The Shire is committed to enhancing the health and wellbeing of the community. The Health and Well Being Strategy identifies emerging risks, and includes strategies to support the whole community.
<b>Library Services</b>	The Shire library offers a range of activities that support and encourage a connected community including parenting workshops, youth activities to promote engagement, partnerships with local schools and Child Health Nurse Clinics, as well as activities for seniors and opportunities for residents to access information to keep them informed and connected.
<b>Neighbourhood Watch (NHW)</b>	The Shire of Serpentine Jarrahdale has an active Neighbourhood Watch group, who participate in a range of community safety and crime prevention activities



	throughout the year to help promote community safety, encourage reporting of crime, and engage connected neighbourhoods. The group meets monthly, and all residents are welcome to get involved. The group is also supported by the Shire, State NHW WA, and WA Police.
<b>Public Community Safety Education</b>	The Shire facilitates multiple education presentations in partnership with WA Police, local schools, and community groups. Mundijong Police in partnership with the Shire, provide a monthly e-newsletter "On the Beat" via eWatch. This newsletter provides residents with updated crime statistics as well as information on current crime trends and community events to promote active community participation. In partnership with Neighbourhood Watch, community safety information is made available at multiple community events throughout the year with an opportunity for residents to chat to their local NHW volunteers and register for eWatch.
<b>Ranger Services</b>	Shire Rangers provide services to the community addressing issues including; animal control, parking (in certain areas), illegal dumping/litter, abandoned vehicles, off road vehicles, bushfire laws education/compliance, homelessness (assistance), and illegal camping.
<b>Road Safety</b>	Road safety education and key messaging, as well as partnerships with local high schools to deliver road safety education programs when available. Road report webpage within the Shires website that contains updated information on road closures and obstructions to keep the community informed.
<b>Security Patrols</b>	The Shire contracts a security provider, to carry out regular security patrols to targeted hot spot locations, carrying out perimeter patrols of designated Shire facilities. This service is reviewed as required and assessed annually.
<b>Waste Management</b>	Waste Services play an important role in maintaining the streetscapes within the Shire, and offer a variety of services, and recycling options for the community to recycle correctly, and responsibly, whilst helping to reduce illegal dumping occurrences. The shire operates a waste transfer facility for household and general waste with specified goods being free of charge for residents to dispose of.
<b>Youth Services</b>	The Youth Development team focus on working with young people between the ages of 12-18 and deliver a variety of programs and activities including; drop in sessions, wellness session, life skills and school holiday programs.

### External Partners

WA Police	Regular meetings and sharing of CCTV footage when required. Collaboration on crime prevention events, Neighbourhood Watch and initiatives
Neighbourhood Watch WA	Monthly meetings Multiple community events Regular liaison with State NHW Office and other local NHW groups via the NHW WA working group
Local Government Community Safety and Crime Prevention Network	Information sharing across other local government areas in relation to crime prevention and community safety. Collaboration on initiatives such as the Gone in Less than 60 Seconds campaign.
DFES, DPIRD, YMCA Department of Communities	The Local Emergency Management Committee (LEMC) is a working group established by the Shire to assist in developing local emergency management arrangements and includes representation from external agencies.
Interagency Services	Representatives from local agencies and Shire staff meet regularly to share information and plans and identify opportunities to collaborate.

## Community Profile

**(update infographic with new stats as per below)**

### Population Growth

Population estimate 2016	27,578
2017	29,021
2018	30,193
2019	31,454
2020	32,496
Population estimate 2021	33,346
Growth	<b>5,768</b>
Population forecast 2036	<b>65,351</b>

**Total land area:** 905km

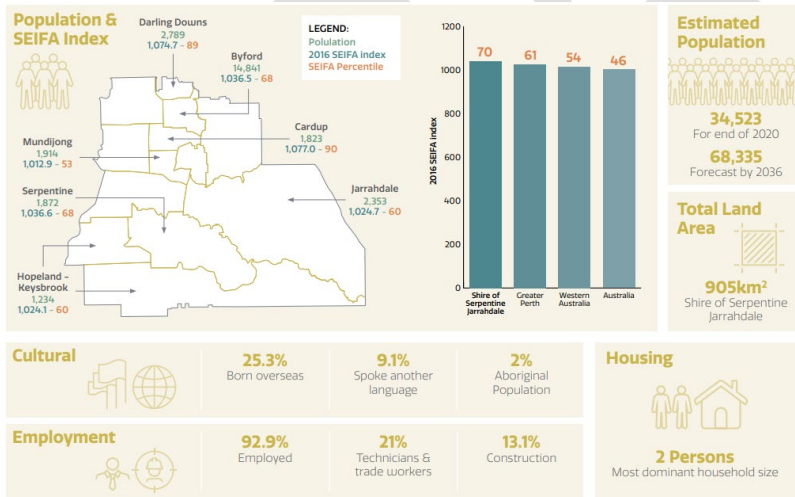
**Housing** – most dominant household size Couples with child(ren) (2.9)

**Household Types** – Couple with child(ren) 42.7% | Couples without children 26.1% | 14.6% live alone | Single parent families 10.7%

**Cultural** – 25.2% born overseas | 10.8% speak another language at home

**Population** – Male 49.9% | Female 50.1% | 2.9% Aboriginal and Torres Strait Islander population

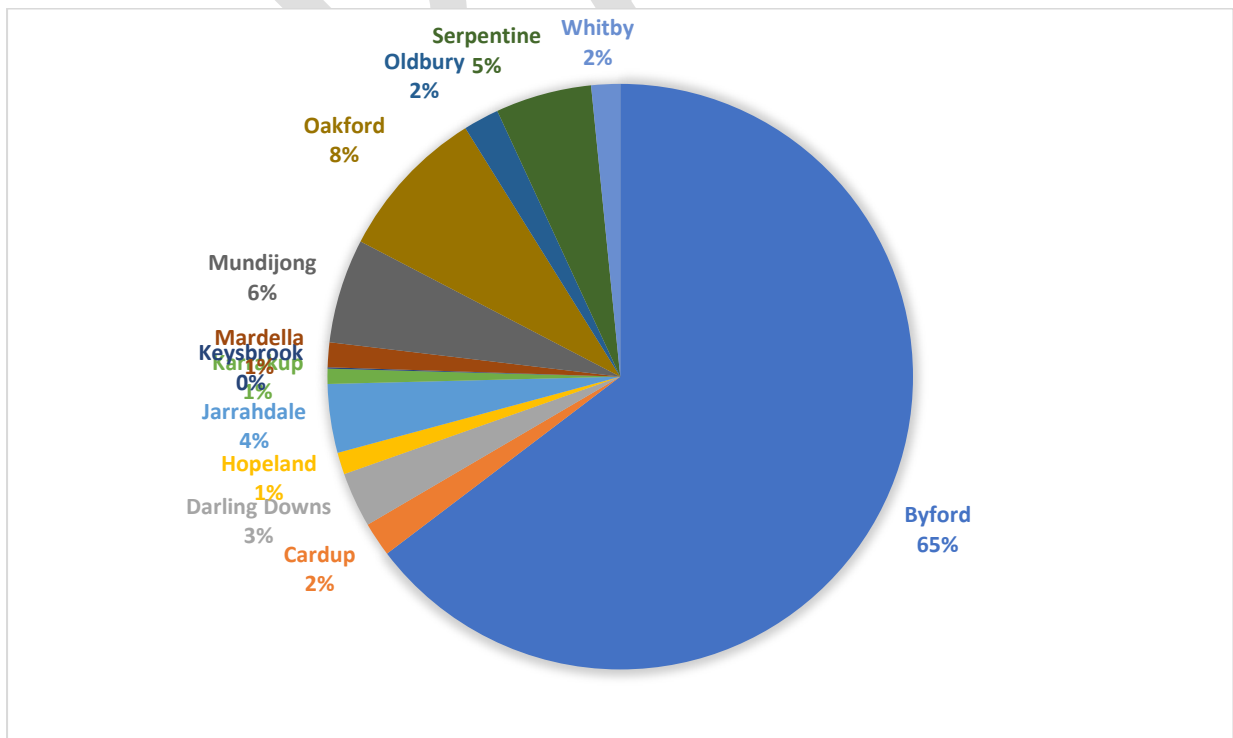
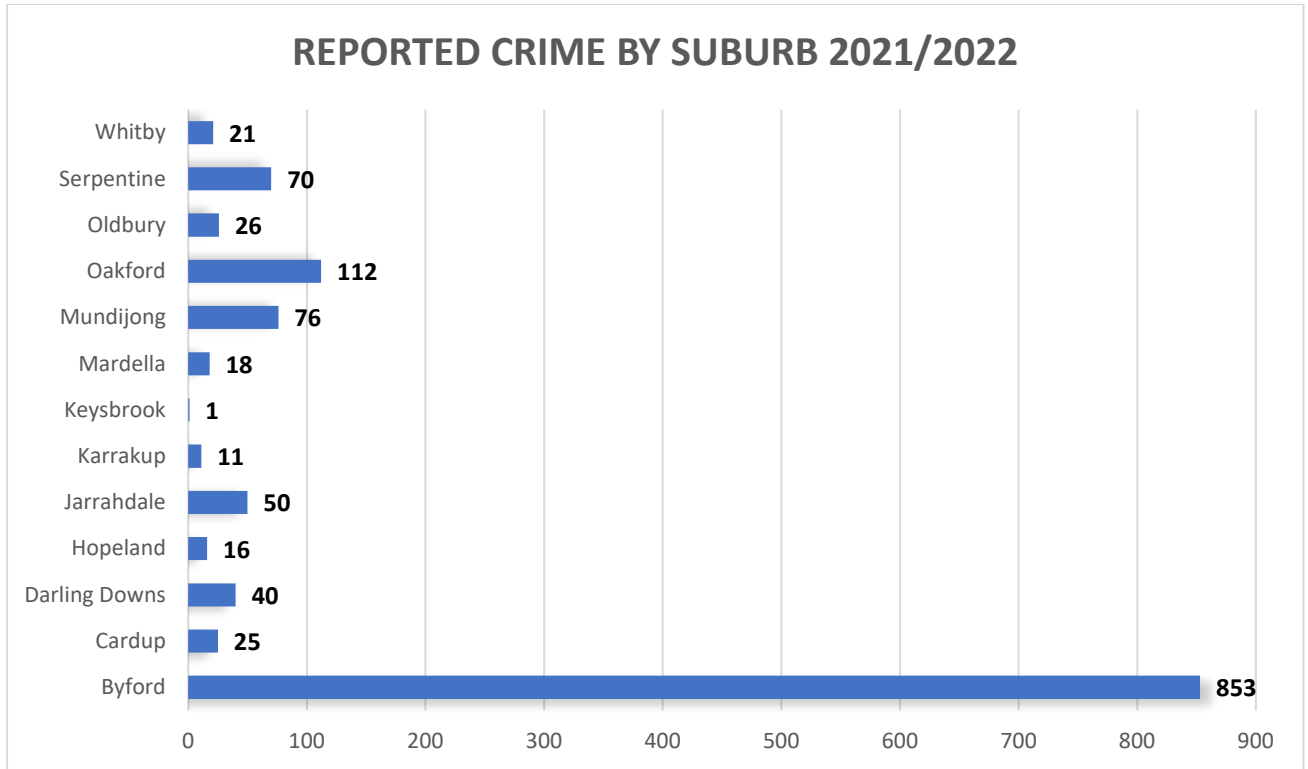
**Employed** – 96.1%



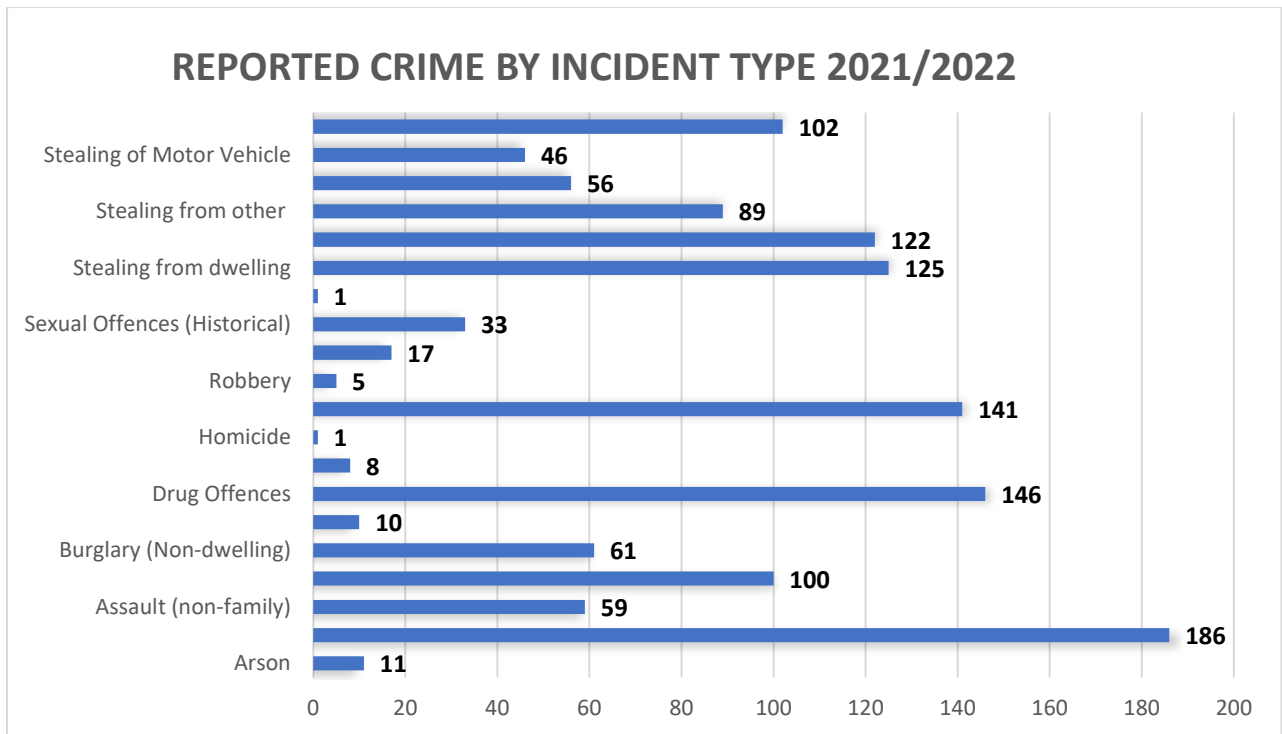
## Crime Statistics Analysis

*\*Please note these figures are based on reported incidents to WA Police. Crime statistics are only one measure of community safety, and many factors contribute to the reporting of crimes, including population size, seasonal trends, operations, or locations such as retail stealing from shopping precincts.*

**Reported Crime by Suburb 2021/2022**

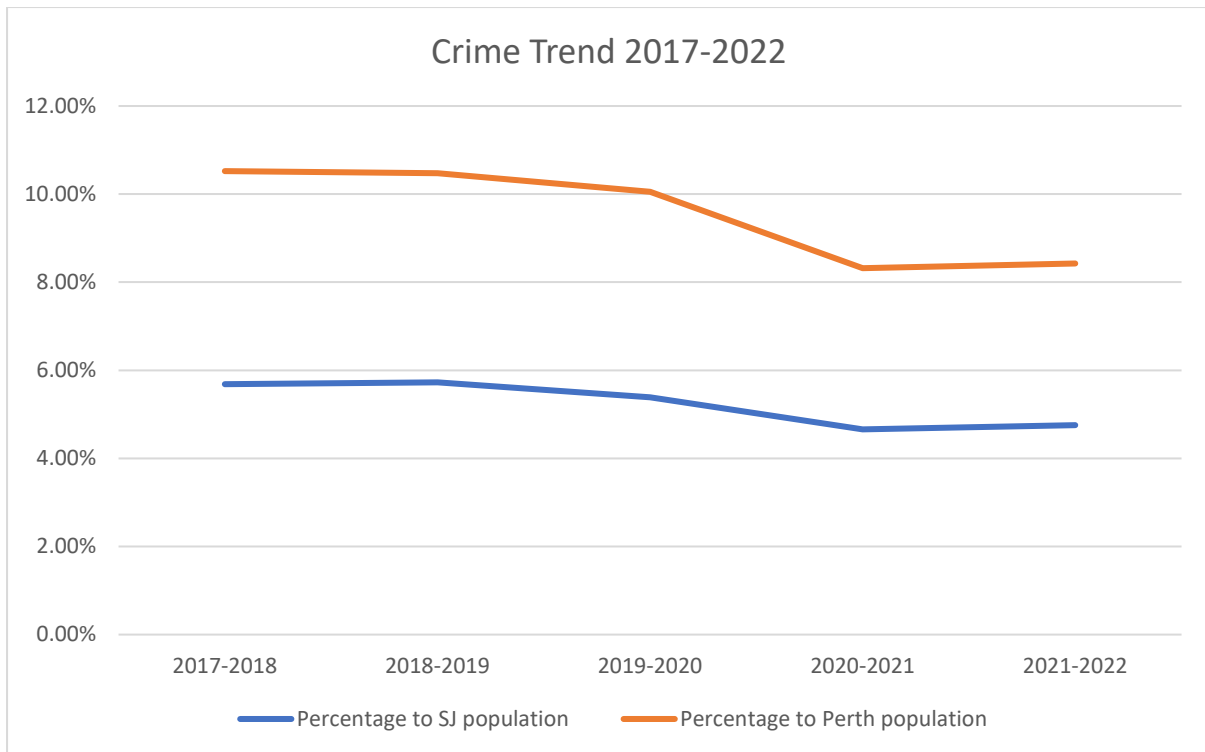


**Reported Crime by Incident Type 2021/2022**



#### Crime statistics over five year period 2017 – 2022

Type of Offence	2017-2018	2018-2019	2019-2020	2020-2021	2021-2022
Homicide	-	1	1	3	1
Sexual Offences	61	71	51	66	87
Assault (Family)	121	121	161	183	186
Assault (Non-Family)	88	85	99	60	64
Threatening Behaviour (Family)	15	17	15	37	27
Threatening Behaviour (Non-Family)	28	19	24	15	20
Deprivation of Liberty	2	2	2	2	-
Robbery	7	6	8	3	6
Dwelling Burglary	165	144	153	106	104
Non-Dwelling Burglary	67	74	75	46	65
Stealing of Motor Vehicle	89	56	65	62	45
Stealing	449	462	429	295	428
Property Damage	174	152	159	153	150
Arson	6	10	7	5	12
Drug Offences	170	236	249	324	150
Graffiti	10	5	4	6	9
Fraud & Related Offences	98	177	92	49	161
Breach of Violence Restraint Order	100	91	100	99	71
<b>Total of Selected Offences</b>	<b>1650</b>	<b>1729</b>	<b>1694</b>	<b>1514</b>	<b>1586</b>
Population estimate	29,021	30,193	31,454	32,496	33,346
Per Capita (100k)	5685.538	5726.493	5385.643	4659.035	4756.193
Percentage to population	<b>5.69%</b>	<b>5.73%</b>	<b>5.39%</b>	<b>4.66%</b>	<b>4.76%</b>
Perth Total Crime Statistics	209,496	211,200	205,336	171,944	176,376
Perth Population	199,100	201,600	204,200	206,700	209,300
Percentage to population	<b>10.52%</b>	<b>10.48%</b>	<b>10.06%</b>	<b>8.32%</b>	<b>8.43%</b>



**\*\*infographic**

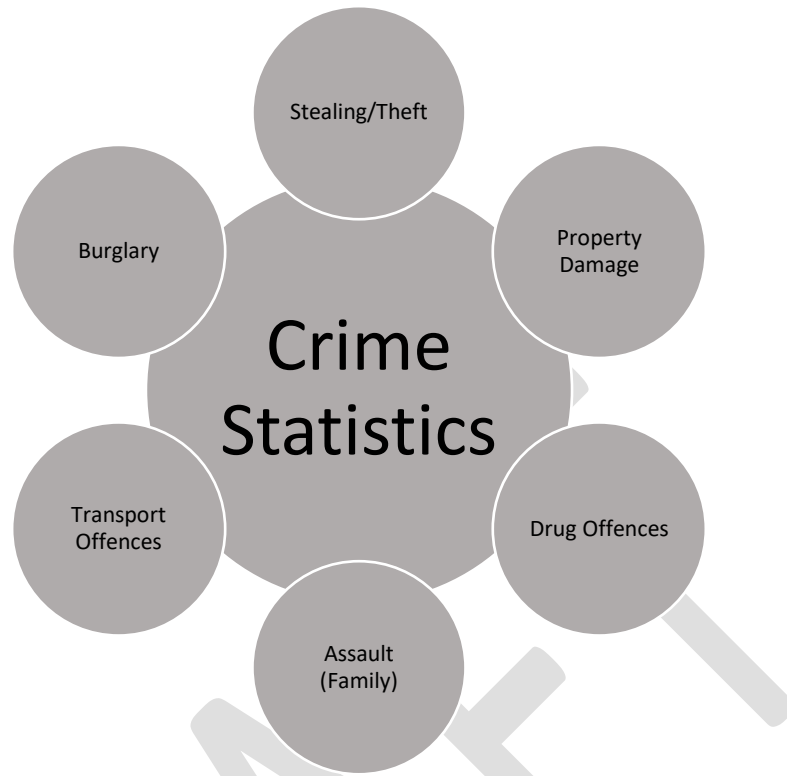
**Decreased:**

- **Assault (non-family)**
- **Dwelling burglaries**
- **Drug related offences**
- **Property damage**
- **Stealing of motor vehicles**

**Increased:**

- **Assault (Family)**
- **Fraud and related offences**
- **Stealing\***

The WA Police crime statistics, identify the following priorities based on reported crimes



DRAFT

## What the community told us

### Community Scorecard Survey

The Shire engaged the services of Catalyse, to prepare a Markyt Community Scorecard survey. This scorecard helps to ensure the community's vision and aspirations are understood and areas of concern are identified. It also shows where the Shire sits in relation to other Local Government Areas, based on similar size and location.

The independent study involved the scorecard invitations being sent out to 6,000 randomly selected households; 2,000 by mail and 4,000 by email. The scorecard was completed by 833 community members (587 from the random selection sample, and 228 from the opt-in sample).

The findings of the scorecard identified Crime and Community Safety as the second highest priority.

### Suggested actions from Markyt

- Advocate for greater police presence across the Shire with more patrols and faster response times
  - Areas of concern (hooning, train line extension concerns, vandalism/theft)
- Advocate for a police station in Byford
- Provide security patrols, especially at night
- Provide an increase in Ranger presence
- Install more CCTV cameras and lighting in hot spot areas

### Community Safety Perception Survey 2021

The Shire has carried out regular opt-in surveys to assess the priorities of the community in relation to crime and community safety. 196 people completed the 2021 survey. The survey findings indicate that those surveyed felt most unsafe on roads, and at public amenities, whilst 64% felt safe living within the Shire overall.

The survey results identified the following areas of concern for residents in relation to crime prevention and community safety, which echo the findings of the previous survey results with the same concerns remaining prevalent within the results over the past 4 years:



DRAFT



## **SECTION THREE: 2023 – 2027 Priorities and Actions**

### **A Shared Responsibility (infographic)**

#### **The Role of Local Government**

*The Western Australian Local Government Association (WALGA) asserts that Local Government plays a central role in the planning, design, management and delivery of crime prevention programs and policies in partnership with the local community and WA Police.*

The Shire of Serpentine Jarrahdale has an active role to play in community safety and crime prevention. For the purpose of this plan, we have identified four ways in which we will action the deliverables;

**Facilitate** – Support, plan, provide direction, implement strategies, policies, and/or procedures to help make things possible, or easier for the community.

**Partner** – Form strategic alliances and collaborate with groups and organisations, to achieve our deliverables.

**Advocate** – As the closest level of government to the community, we are a voice for the community, in relation to community safety and crime prevention.

**Fund** – We will provide the funding required to achieve the deliverable or seek external funding opportunities available.

#### **The Role of Our Community**

Our residents are well placed to identify any issues and trends within the local community, and we encourage active participation to positively contribute to community safety and crime prevention.

Get to know your neighbours	Your neighbours are one of the best security assets, they can keep an eye on your property and report anything suspicious.
Report crime and suspicious activity	Keep an eye out, report anything that doesn't look or feel right. Every report adds to statistical data and helps to build the bigger picture, as well as assist with the allocation of available resources.
Get informed	There are many resources available online to help educate yourself and your family on safety, and crime prevention. Visit the Shire website for links and contacts. Sign up to ewatch to receive the latest crime statistics and advice on how to target harden your home.
Public spaces	Report any safety concerns that appear in public spaces including graffiti, lighting issues, roads and paths.

**Priorities, Objectives, Actions and Outcomes*****(Facilitate – Advocate – Partner – Fund)*****Priority 1 - Safer streets and spaces**

- Objective 1.1 Create a safe physical environment for the community to move about freely without the fear of harm or injury
- Objective 1.2 Provide education to the community including businesses on how to implement Crime Prevention Through Environmental Design (CPTED) principles
- Objective 1.3 Promote road safety
- Objective 1.4 Increase the presence of crime prevention and community safety related services
- Objective 1.5 Reduce the opportunity for crime, using technology

**Priority 2 - Increase education and awareness of Community Safety and Crime Prevention**

- Objective 2.1 Provide opportunities for the community to access community safety and crime prevention information
- Objective 2.2 Encourage the reporting of crime and suspicious activity

**Priority 3 – Build a connected and more resilient community**

- Objective 3.1 Strengthen partnerships and establish new ones with internal departments and external agencies to collaborate and create a whole community approach to crime prevention and community safety
- Objective 3.2 Promote a connected community and encourage neighbourhood connection
- Objective 3.3 Emergency management and Bush Fire preparedness education
- Objective 3.4 Support families, children, young people, and vulnerable members of the community

PRIORITY ONE: SAFER STREETS AND SPACES						
	Objectives	Actions	Timeframe			Key Partners
			Short term	Mid term	Long term	
1.1	Create a safe physical environment for the community to move about freely without the fear of harm or injury	Continue to <b>facilitate</b> the use Crime Prevention Through Environmental Design (CPTED) principles in design of parks, and public open spaces	x	x	x	Planning
		<b>Facilitate</b> graffiti removal from council assets, and investigate public urban art opportunities	x	x	x	Graffiti Taskforce
		<b>Facilitate</b> messaging and education of the reporting process of lighting faults to Western Power. Utilise Ranger Services during Winter months to report any lighting outages they identify during their night patrols.	x	x	x	Western Power Ranger Services
1.2	Provide education to the community including businesses on how to implement Crime Prevention Through Environmental Design (CPTED) principles	<b>Facilitate</b> a security and crime prevention presentation for local businesses, and residents to assist with protecting their premises, and reporting suspicious activity to WA Police.		x	x	WA Police
		<b>Facilitate</b> the provision of self-audit checklists and tips and advice through various communication mediums and increase awareness of community focused grants available to businesses, community groups, and residents.	x	x	x	Community Safety WA Police
1.3	Promote road safety	<b>Partner</b> with local schools and community groups to support road safety education initiatives		x	x	Schools Road Wise
		<b>Facilitate</b> targeted road safety, key messaging campaigns during road safety week across a range of mediums	x	x	x	Road Wise WA Police
		<b>Facilitate</b> awareness and education on off-road vehicle safety and security		x	x	WA Police Ranger Services

1.4	Increase the presence of crime prevention and community safety related services	<b>Advocate</b> for greater police presence using appropriate forums		x	x	WA Police
		Continue to <b>fund</b> security patrols, including foot patrols of Shire assets at identified hot spot locations	x	x	x	Community Safety
		<b>Facilitate</b> a trial initiative of holiday watch patrols utilising current Rangers	x			Ranger Services
1.5	Reduce the opportunity for crime, using technology	Continue to <b>partner</b> with WA Police to provide CCTV footage in line with the Shires CCTV Policy	x	x	x	WA Police Community Safety
		<b>Partner</b> with WA Police to promote the registration of residential CCTV cameras via Cam Map WA to assist police with investigations	x	x	x	WA Police
		Investigate opportunities to expand CCTV within the Shire.	x	x	x	WA Police Community Safety

PRIORITY TWO: INCREASE EDUCATION AND AWARENESS OF COMMUNITY SAFETY AND CRIME PREVENTION						
	Objectives	Actions	Timeframe			Key Partners
			Short term	Mid term	Long term	
2.1	Provide opportunities for the community to access community safety and crime prevention information	<b>Partner</b> with local schools and community groups to identify opportunities to present on community safety topics, or facilitate external presenters on specific crime related topics.	x	x	x	Schools WA Police
		<b>Facilitate</b> the communication of key messages throughout the community using various mediums by developing a marketing plan for targeted campaigns.	x	x	x	Community Safety Communications WA Police
		<b>Partner</b> with WA Police to Increase the number of eWatch registrations by promoting the email newsletter and providing input when requested	x	x	x	WA Police
		<b>Partner</b> with SJ Shire Neighbourhood Watch group to attend community events to provide residents with crime prevention resources and information.	x	x	x	Neighbourhood Watch WA
		<b>Facilitate</b> the provision of community safety information hubs at locations including the library, YMCA and Shire office, to reflect the information provided on the Shire's website and provide resources for the community	x	x	x	Community Safety Communications
2.2	Encourage the reporting of crime and suspicious activity	<b>Facilitate</b> an awareness campaign to encourage the reporting of crime, including drug related, and antisocial activity to Crimestoppers and WA Police. Create a 'who do I call?' flyer and infographic to share online.	x	x	x	WA Police Crimestoppers

		Continue to <b>facilitate</b> Eyes on the Street with Shire staff reporting information to WA Police	x	x	x	WA Police
--	--	--	---	---	---	-----------

DRAFT

PRIORITY THREE: BUILD A CONNECTED, AND MORE RESILIENT COMMUNITY						
	Objectives	Actions	Timeframe			Key Partners
			Short term	Mid term	Long term	
3.1	Strengthen partnerships and establish new ones with internal departments and external agencies to collaborate and create a whole community approach to crime prevention and community safety	<b>Partner</b> with external agencies to create a multi-agency approach to crime prevention in the area including assisting with strategies in preparation for the Byford Rail extension completion.	x	x	x	Metronet/PTA WA Police Community Safety
		<b>Partner</b> with WA Police and Neighbourhood Watch to implement initiatives and campaigns to promote community safety and crime prevention.	x	x	x	WA Police Neighbourhood Watch
3.2	Promote a connected community and encourage neighbourhood connections	<b>Facilitate</b> the Shire of Serpentine Jarrahdale's Neighbourhood Watch group and provide new residents with information of meetings, inviting them to join NHW to increase participation.	x	x	x	Neighbourhood Watch
		<b>Advocate</b> for more resources/training opportunities for Neighbourhood Watch and engage more participants and initiatives.	x	x	x	Neighbourhood Watch
		Continue to <b>facilitate</b> local community events promoting opportunities for residents to obtain grants when available for friendly neighbour events.	x	x	x	Neighbourhood Watch Community Safety Ranger Services WA Police

3.3	Emergency management and Bush Fire preparedness education	Continue to <b>facilitate</b> education awareness for residents on bush fire mitigation of their property and encourage residents to have a bush fire action plan.	x	x	x	Emergency Management and Fire Safety
		<b>Facilitate</b> opportunities for the Bush Fire Awareness team to promote fire safety messaging within the community.	x	x	x	Bush Fire Awareness Team
3.4	Support families, children, young people, and vulnerable members of the community	<b>Partner</b> with external agencies to inform the community of services available to them.	x	x	x	Community Development Community Safety
		Continue to <b>facilitate</b> affordable events for residents to encourage connectivity and inclusion.	x	x	x	Community Development
		Continue to <b>facilitate</b> youth engagement opportunities and provide programs and initiatives.	x	x	x	Youth Services WA Police
		<b>Partner</b> with agencies to provide training and information sessions for seniors.	x	x	x	Community Safety Community Development WA Police



Priority	Outcomes	Measurables	Crimes/Safety Concerns Targeted
<b>1</b> <b>Safer Streets and Spaces</b> <i>Creating a safe physical environment for people to move about without fear or risk of harm, or injury.</i>	<ul style="list-style-type: none"> <li>• Increase awareness of CPTED principles throughout the wider community</li> <li>• Graffiti reported and removed to increase street appeal and sense of ownership of spaces</li> <li>• Street light faults being reported to Western Power</li> <li>• Residents utilising initiatives offered</li> </ul>	<ul style="list-style-type: none"> <li>• Information sessions provided and attendance</li> <li>• Graffiti reports</li> <li>• Streetlight reports</li> <li>• Number of holiday watch patrols carried out</li> </ul>	Burglary Theft Property damage Traffic Offences Road Safety
<b>2</b> <b>Increase Education and Awareness of Community Safety and Crime Prevention</b> <i>Making resources and information more accessible to the community, keeping the community informed.</i>	<ul style="list-style-type: none"> <li>• Residents have access to crime trend information and statistics</li> <li>• Communication plan developed to cover a variety of crime prevention and community safety topics, made available for the community</li> <li>• Residents know what to report and who to report to</li> <li>• Information and resources are more accessible to the community</li> </ul>	<ul style="list-style-type: none"> <li>• eWatch subscriptions increased</li> <li>• Communication/education plan and branding of community safety messaging rolled out</li> <li>• Increase in number of information sessions available to residents</li> <li>• Increase in community reporting</li> </ul>	Transport offences Family Domestic Assault Drugs Property damage Stealing Theft Burglary Off Road Vehicles Road Safety Bush Fire Risk
<b>3</b> <b>Build a Connected, and more Resilient Community</b> <i>Strengthen partnerships, encourage neighbourhood connectivity and support the community</i>	<ul style="list-style-type: none"> <li>• Strong partnerships with internal and external agencies, are maintained or developed.</li> <li>• Residents are encouraged to be involved with the principles of NHW, to promote neighbourhood connections.</li> <li>• Residents are engaged with bush fire awareness and develop their bush fire safety plans</li> <li>• Promote the existing services and identify any service gaps for residents to access support.</li> </ul>	<ul style="list-style-type: none"> <li>• Increased Neighbourhood Watch participation</li> <li>• Increase in the number of Friendly Neighbour grants applied for and received</li> <li>• More families with a bush fire safety plan</li> </ul>	Bush Fire Risk Community connection Inclusivity

**References**

[Home | Shire of Serpentine Jarrahdale | Community profile \(id.com.au\)](#)

[Crime Statistics | Western Australia Police Force](#)

[PowerPoint Presentation \(sishire.wa.gov.au\)](#)

*NOTE: This is a draft version. A corporately designed document will be created upon Council endorsement.*

DRAFT