



Byford Arts Portal

Proposed launch: Post July 2021*

* Subject to available budget and lead in times, including border closures

Portal Specifications



Dimensions: 6m long x 2.6m wide x 2.6m high

Internet:

The portal requires a hardwire Ethernet connection of 15mbps up and 15mbps down with a ping under 15ms. The Portal can operate with less bandwidth and a wifi or even cellular connection if necessary, but this may degrade quality and reliability.

Electricity:

The portal requires two 20a circuits (110v or 220v depending on your location and unit). There are two separate outputs on the Portal. One is for HVAC, which is single phase, either 110v or 208/230v, and 60hz, which draws ~12a. The other output, which is a mix of electronics equipment, draws ~5amps.

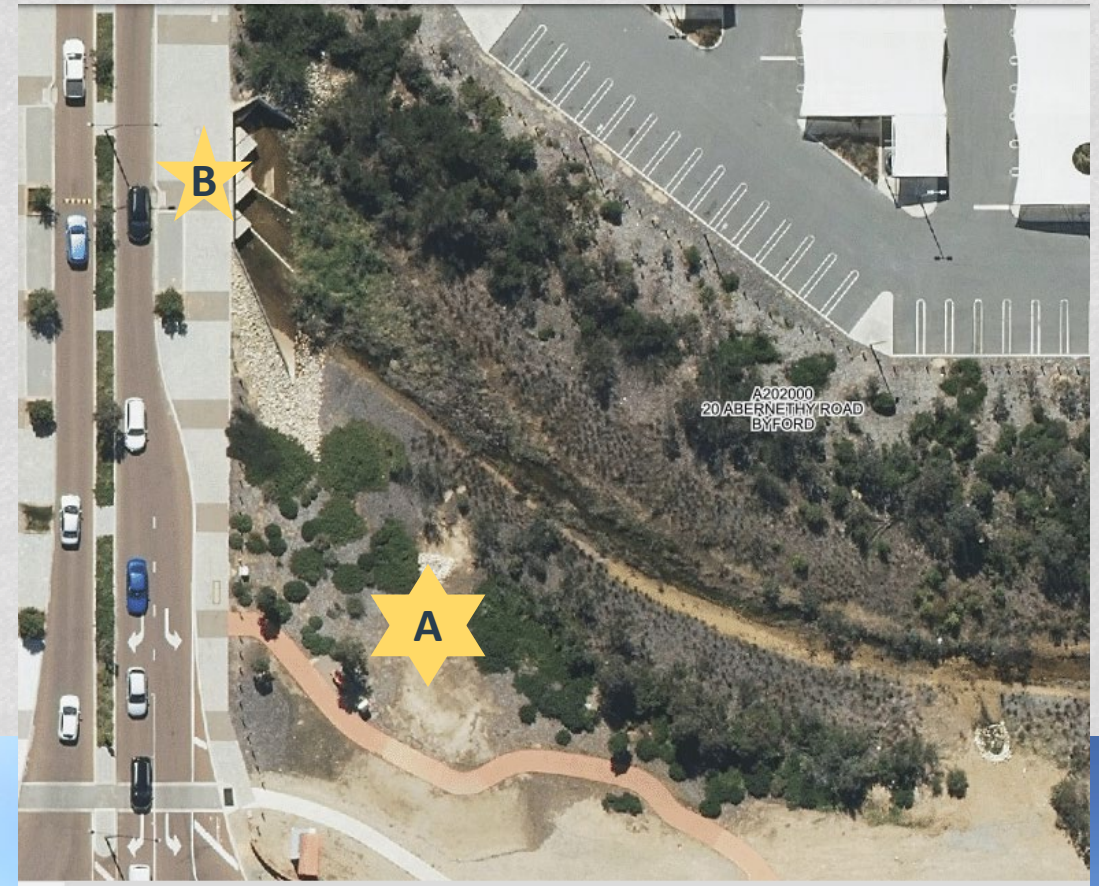
Other:

Delivered by rollback truck, complex placements will require crane or forklift.
Accessible, locked with padlocks, heating and cooling included.

Town Centre Location Options



Option One: Town Centre Public Open Space



Option One (A): Town Centre Public Open Space

Comments



- Highly visible location for passers by and visitors.
- Max availability of car parks within reasonable distance without crossing roads of all options (accessible/compliant connections to Coles and Woolworths carpark areas. Some disconnection across railway to PTA carpark).
- Clear paths and accessibility provisions from carpark areas; distinct pedestrian crossings.
- Bin in situ.
- Can be located under street lighting (fair lighting at night).
- Proximity to cafes and shops for food/drinks.



Shire of
Serpentine
Jarrahdale



Option One (A): Town Centre Public Open Space



Comments

- Proximity to high school students (could coordinate both in school hour and out of school hour programs in partnership).
- Clear set-backs from road.
- Landscaping/bump in infrastructure could provide fantastic spill out space (multiple areas) including picnic tables, shade, activities for art etc.
- Art trail could start out front of portal in multiple directions (central to main precincts in area).
- Toilets available in Centre – or bump in can be located discreetly away from portal.
- Bus stop directly opposite.

Option One (A): Town Centre Public Open Space



Comments

- Not currently a Shire reserve.
- Negotiations may be required for car park areas.
- Additional pathway from the carpark area would be beneficial to improve connectivity.
- Cost to beautify area for spill out zone – not part of current landscaping design works.
- Timing of Abernethy sister statue installation to be considered as relevant to portal implementation.

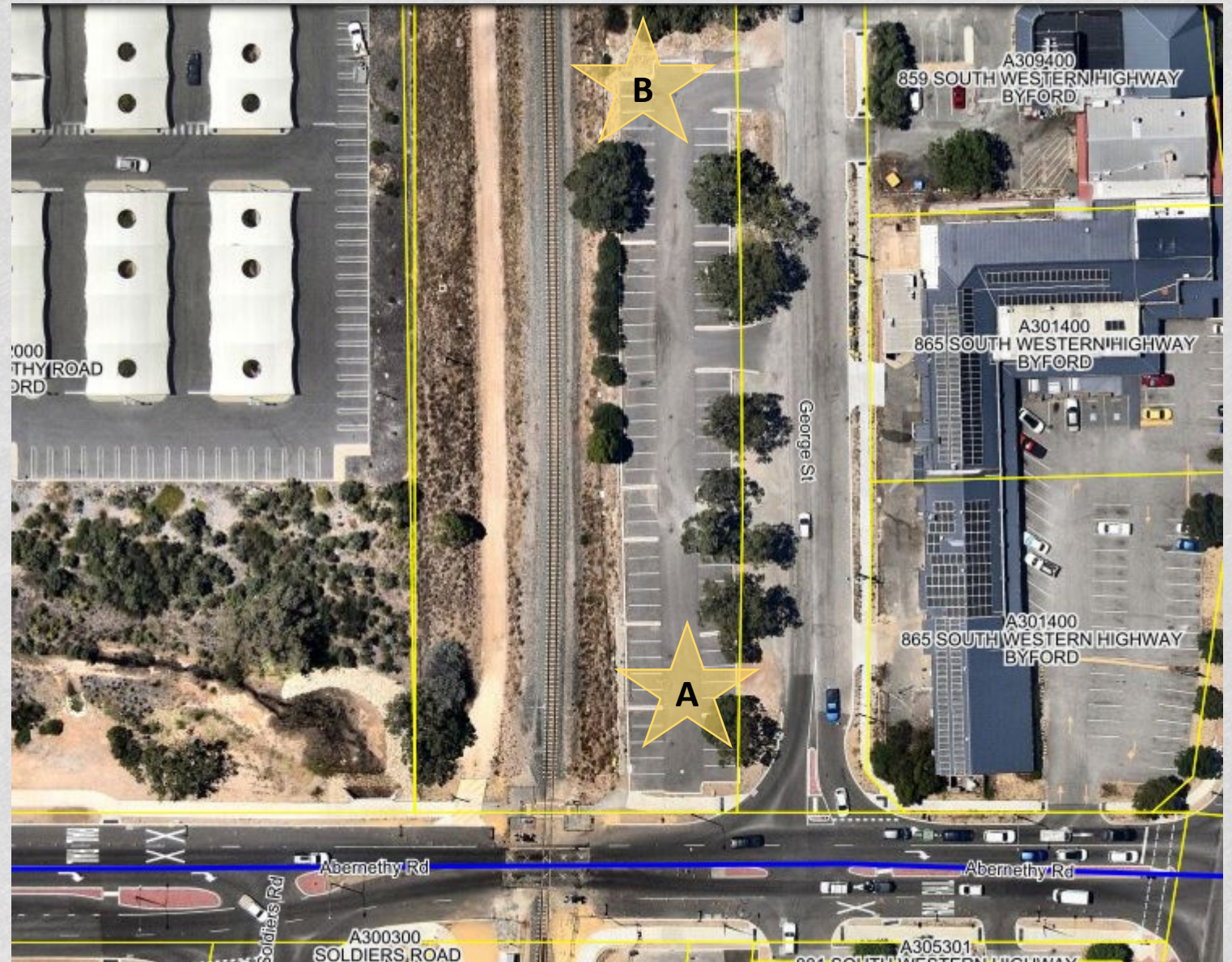
Option One (B): Future Town Centre



Comments

- Wide path that could accommodate placement of portal and retain pedestrian access.
- No levelling/grading requirements
- Back of portal could block drainage view.
- Close access to pits if required.
- Well lit at night from street lighting.
- Could use road side bay for activation/spill out.
- Less visible than street corner.
- Less spill out space available.
- Some similar benefits to first location, such as proximity to high school, Centre toilets and accessible pedestrian crossings and pathways.

Option Two: Public Transport Authority Carpark (subleased to private business owner)



Option Two: Public Transport Authority Carpark



Comments

- Connection to smaller local business owners.
- Visible to passers by and visitors (depending on location within carpark).
- Available car parks onsite, no pedestrian crossing of roads required, and connections to other carparks such as Coles and Woolworths.
- Could be activated with bump in infrastructure such as picnic tables to create a vibrant square of activity.
- No requirement to cross roads from car park.
- Proximity to shops and cafes for food and drink.
- Art trail could start out front of portal in multiple directions. Longer distance to some shopping locations.
- Short walk to bus stop (at service station).

Option Two: Public Transport Authority Carpark



Comments

- Waste and connection to services (power and internet) to be explored.
- Negotiation with private business owner and the Public Transport Authority required- may require financial commitment.
- Surrounding areas overlook some “back of house” areas for businesses.
- Works occurring at the railway crossing:
 - Noise impacts to programming.
 - Footpath connections for Art Trail.
 - Possible other impacts on access or implementation.
- Portable toilets required.



Four: The Glades Shopping Precinct

Alternate options



Three: Percy's Park (Mead Street)

Option Three: Percy's Park (Mead Street)



Comments

- Great green space (spill out space) and infrastructure in place including toilet.
- Gate can be opened for carparking (larger programming activities) or street side parking (smaller/intimate programming).
- Walking distance to many residents.
- Central to both Byford shopping precincts, and Shire owned reserve.
- Not as visible for general visitors or passers by (lower traffic area) and would have to rely on marketing and signage for location purposes.
- Power and internet sources to be sourced and passive surveillance particularly at night minimal.
- No lights.

Option Four: The Glades Shopping Precinct



Comments

- Power sources available. Internet connectivity to be determined.
- Surrounding parking areas available.
- Close to shops and café for food and refreshments.
- Close to residential areas.
- Would require signage to direct visitors, as area not as high traffic as option one and two town centre locations.
- No public toilets but proximity to shopping precinct toilets if access agreed.
- Could be placed near street lighting.
- Easier location to close streets for activation activities.
- Options for street side placement or precinct central grass area.