

Planning for the *future*



Advocacy 2025



For more:



www.sjshire.wa.gov.au/our-shire/advocacy-2025

The Shire has a proven track record of delivering projects in partnership with State Government. Below are some of our recent State Government funding commitments.

Project	Commitment	Update
Jarrahdale Outdoor Hub	\$30,000	Complete Stage 1 includes an open irrigated turf area, more accessible pathways and a public BBQ facility.
Jarrahdale Cemetery toilet	\$35,000	Complete New public toilet facility at Jarrahdale Cemetery.
Briggs Park dugouts	\$48,380	Complete Player dugouts installed.
SJ Community Recreation Centre	\$106,500	Complete Facility upgrades and improvements delivered (basketball backboards, painting, LED lighting).
Byford Skate Park – Stage 2 upgrades	\$800,000	In progress Design and construction tender awarded. Detailed design complete. Clearing permit approved and offset program being finalised. Construction to commence in February 2025.
Byford Pump Track	\$1.34 million	In progress Planning and design complete. Tender for design and construction awarded. Construction to commence in the first half of 2025.
Hypergrowth Roads Program	\$18 million	In progress Kargotich Road Stage 1 upgrades (between Rowley Road and Thomas Road) completed late 2023. Upgrades to Soldiers Road roundabouts completed. Tender for final works (upgrade of Kargotich Road between Thomas and Orton Roads) awarded. Starting February 2025.
Keirnan Park Recreation and Sporting Precinct	\$22 million	In progress Planning for Stages 1A and 1B complete. Value management undertaken. Heritage and clearing approvals in place. Water allocation approved. Tender for construction of two community sporting ovals and pavilion as part of Stage 1A called early October 2024. Works to commence early 2025.

Fremantle

Rockingham



Nine priority roads for upgrading

Improved local roads for greater safety



Road Names



Kargotich Road – Abernethy Road intersection \$6.83m

Transformation of the intersection of Kargotich Road and Abernethy Road to a roundabout.



Kargotich Road – Thomas Road intersection \$5.41m

Transformation of the intersection of Kargotich Road and Thomas Road to a roundabout.



Kargotich Road – Gossage Road intersection \$4.82m

Transformation of the intersection of Kargotich Road and Gossage Road to a roundabout.



Kargotich Road – North of Mundijong Road \$15.0m

From Orton Road to Mundijong Road – SLK 6.44 to 7.96 and 8.46 to 13.01, excluding Gossage Rd intersection proposed roundabout works (priority 3).



Hopkinson Road \$2.6m

From 400m North of Orton Road to Shire boundary (200m North of Gloaming Way), excluding sections involved in the Tonkin Highway extension – SLK 4.05 to 5.45, 5.75 to 6.32 and 6.92 to 8.42.



Nicholson Road \$1.9m

From Thomas Road to Abernethy Road – SLK 2.78 to 4.87. **COMPLETED**



Abernethy Road \$5.8m

From Hopkinson Road to Kargotich Road – SLK 3.43 to 8.09.



Orton Road \$4.7m

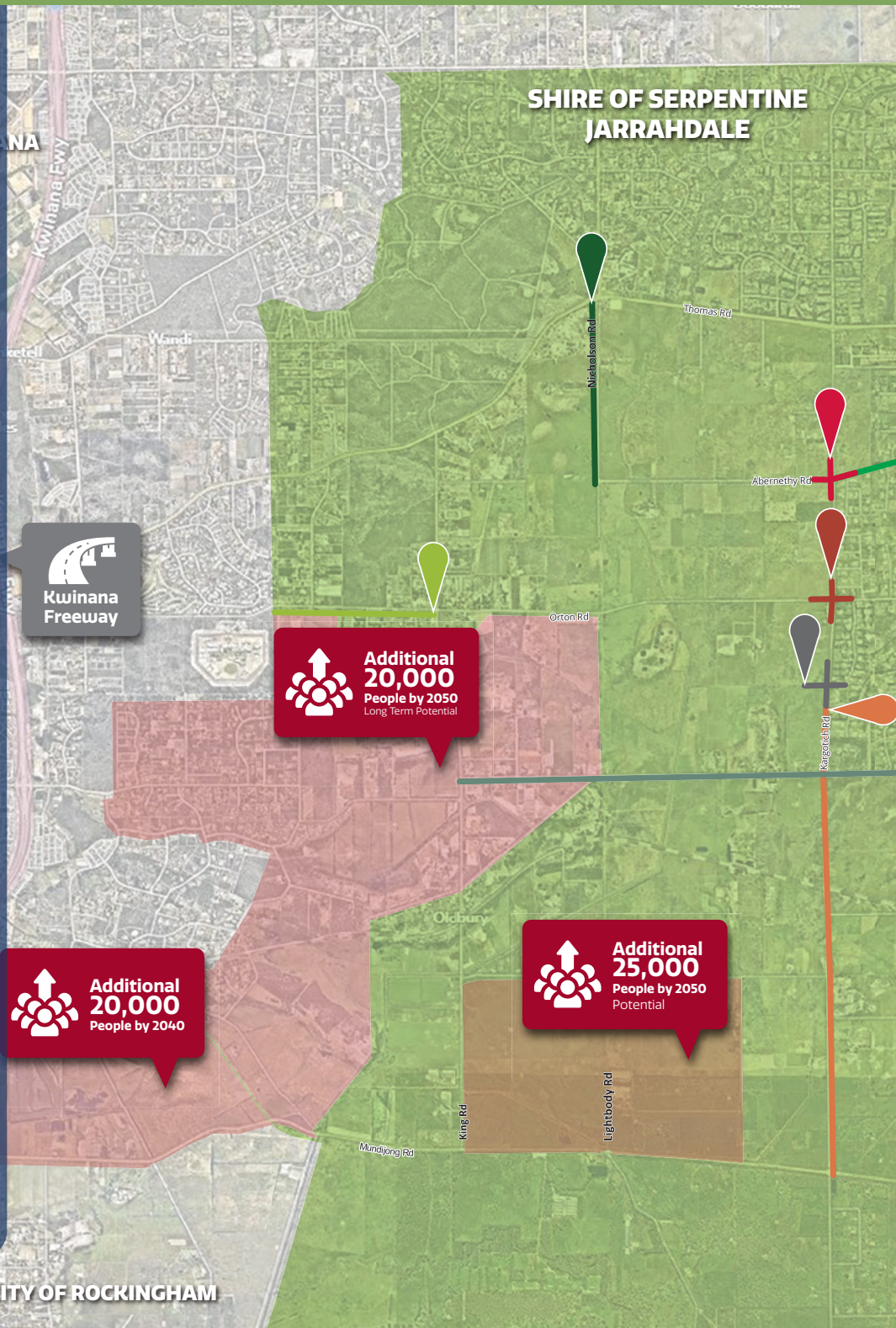
From Casuarina Road to 1.80km East of King Road – SLK 0.00 to 3.70.



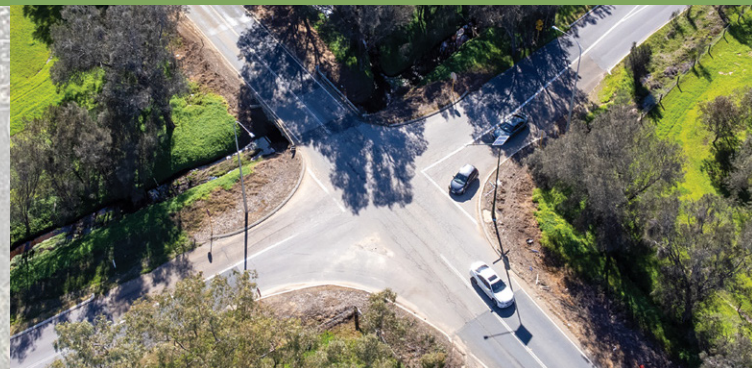
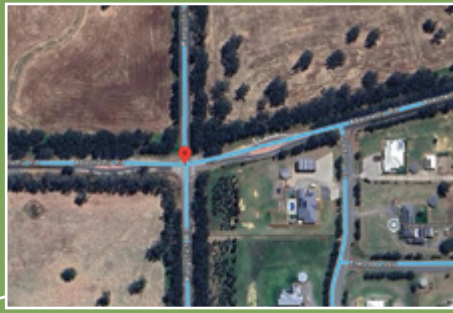
Gossage Road \$5.1m

From Hopkinson Road to 270m West of Bournbrook Avenue and 350m West of Kargotich Road to King Road – SLK 0.00 to 1.51 and 2.39 to 6.28.

TOTAL \$44.2m



Planning for
the *future*



Many of SJ's roads are not fit for purpose. And with the \$1 billion Tonkin Highway extension set to bring more traffic to the area, it is vital that they are upgraded.

That's why we are advocating for funding to improve safety and standards for nine of our local roads. These have been prioritised based on crash data, current and future traffic volumes and classification, road condition and future growth and development in the area.

With State Government support, the Shire has already delivered on \$18 million of upgrades to local roads.

Without continued support from the State and Federal Governments, the Shire will struggle to maintain and improve these critical roads resulting in strained resources, reduced quality of life for residents, and missed opportunities for economic development across the region.



How can you work with us?

We are seeking \$44.2 million for urgent upgrades to local roads. Government funding towards these vital road upgrades will ensure that we can grow sustainably, maintain a safe road network, and offer residents the services they need to thrive.

Briggs Park

A community hub for sport and recreation in the heart of Byford.



Planning for
the *future*



Briggs Park serves as the primary hub for various recreational activities, including AFL, diamond sports, BMX, cricket, skateboarding, and youth facilities.

Additionally, the SJ Community Recreation Centre houses amenities such as basketball and volleyball courts, a gymnasium, a performance space, and accommodates numerous other user groups. The Briggs Park Masterplan outlines a shared long-term vision, and long-term planning that provides a framework for future growth.



SJ Community Recreation Centre



Expansion of vital sporting facilities

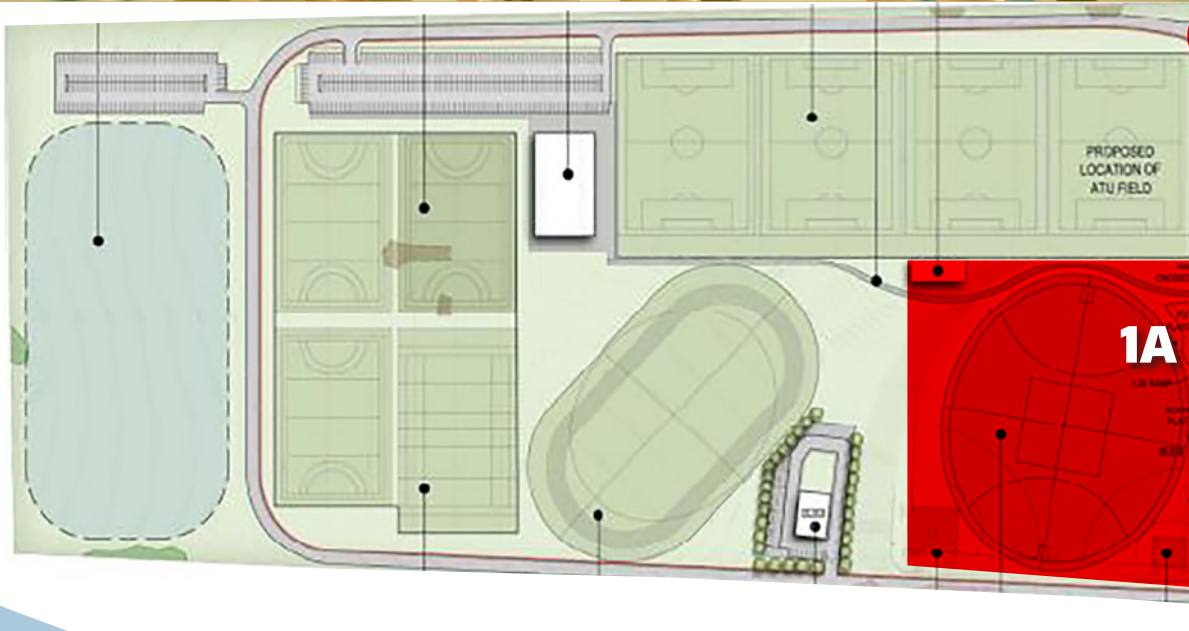
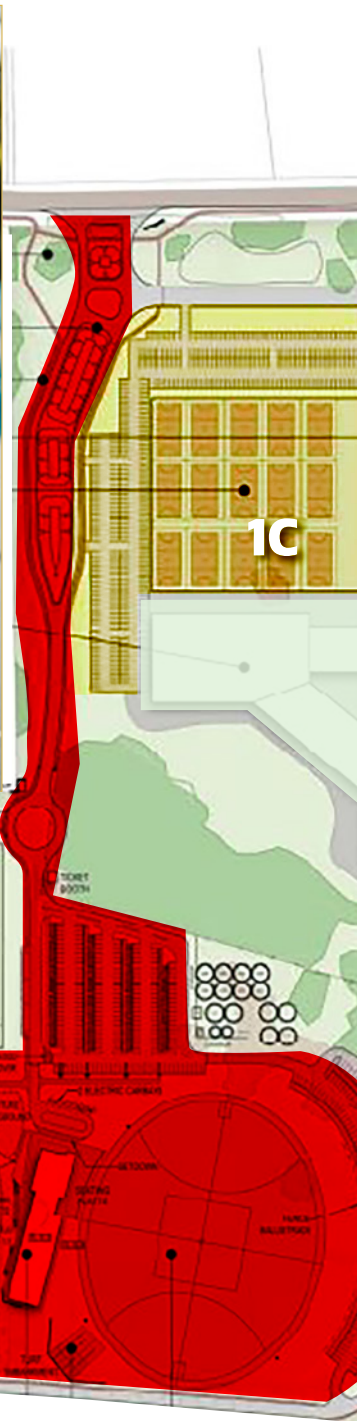


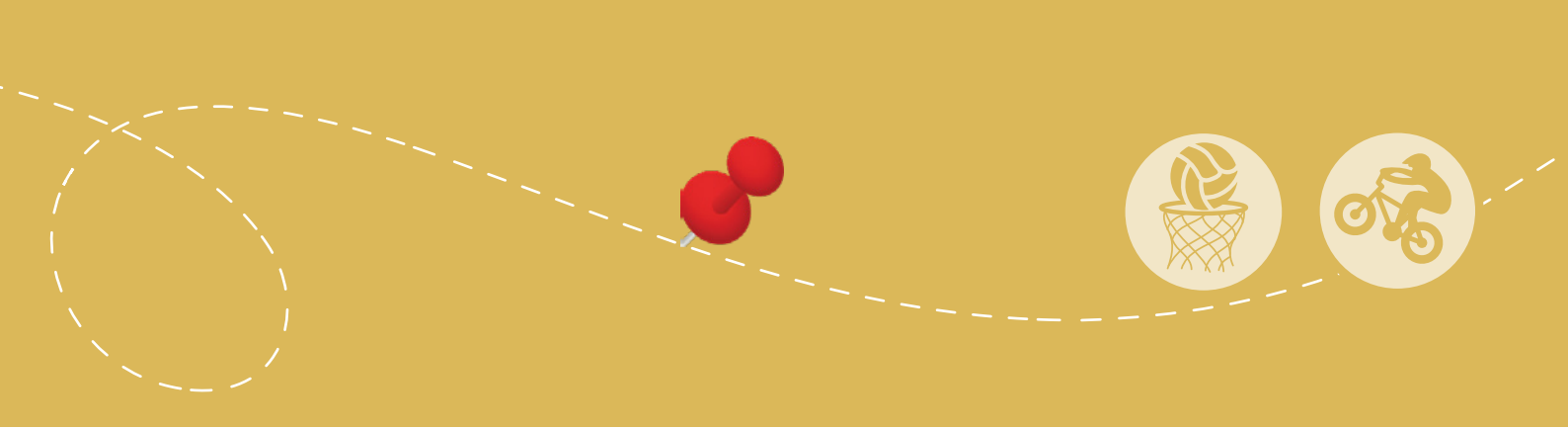
Planning for
the *future*



Keirnan Park Recreation and Sporting Precinct

A regional sporting precinct to support growing sport and recreation





Keirnan Park is set to become our flagship regional sporting facility, boasting netball, BMX and a host of other sports across the 63-hectare site in Mundijong.

The State Government has supported Keirnan Park through a \$22 million grant to help deliver Stage One, which includes two sporting ovals, multi-use change rooms and pavilion.



Advocacy 2025

State Level BMX Track and Pavilion



A new home for BMX at the Keirnan Park Recreation and Sporting Precinct



Planning for
the *future*

The current BMX track and facilities at Briggs Park are old and require significant investment in time by volunteers to keep the track safe and suitable for training and competitions.

The Byford BMX Club's vision is for a new track and facilities at Keirnan Park Recreation and Sporting Precinct.

A new BMX track and clubhouse are essential to meet the needs of this popular and growing sport for several reasons:

- **Increased participation** The rising popularity of BMX has led to higher demand for quality facilities, and existing tracks may be overused, limiting opportunities for riders to train and compete.
- **Enhancing rider experience** A modern track and clubhouse provide a safe, enjoyable environment for riders of all ages and skill levels, fostering a sense of community and encouraging more frequent participation.
- **Supporting skill development** Updated facilities create a space for riders to develop their skills, attract coaching programs, and allow local talent to thrive in a sport that requires specialised infrastructure.
- **Hosting competitions** A new track and clubhouse could accommodate regional, state, or national events, bringing in spectators and boosting the local tourism and economy while promoting the sport.
- **Community engagement** A well-designed clubhouse serves as a hub for social interaction, education, and club management, supporting the broader BMX community and providing a welcoming space for families and supporters.



How can you work with us?

We're seeking \$12.5 million to help realise our community's vision for a modern, contemporary BMX track and pavilion.



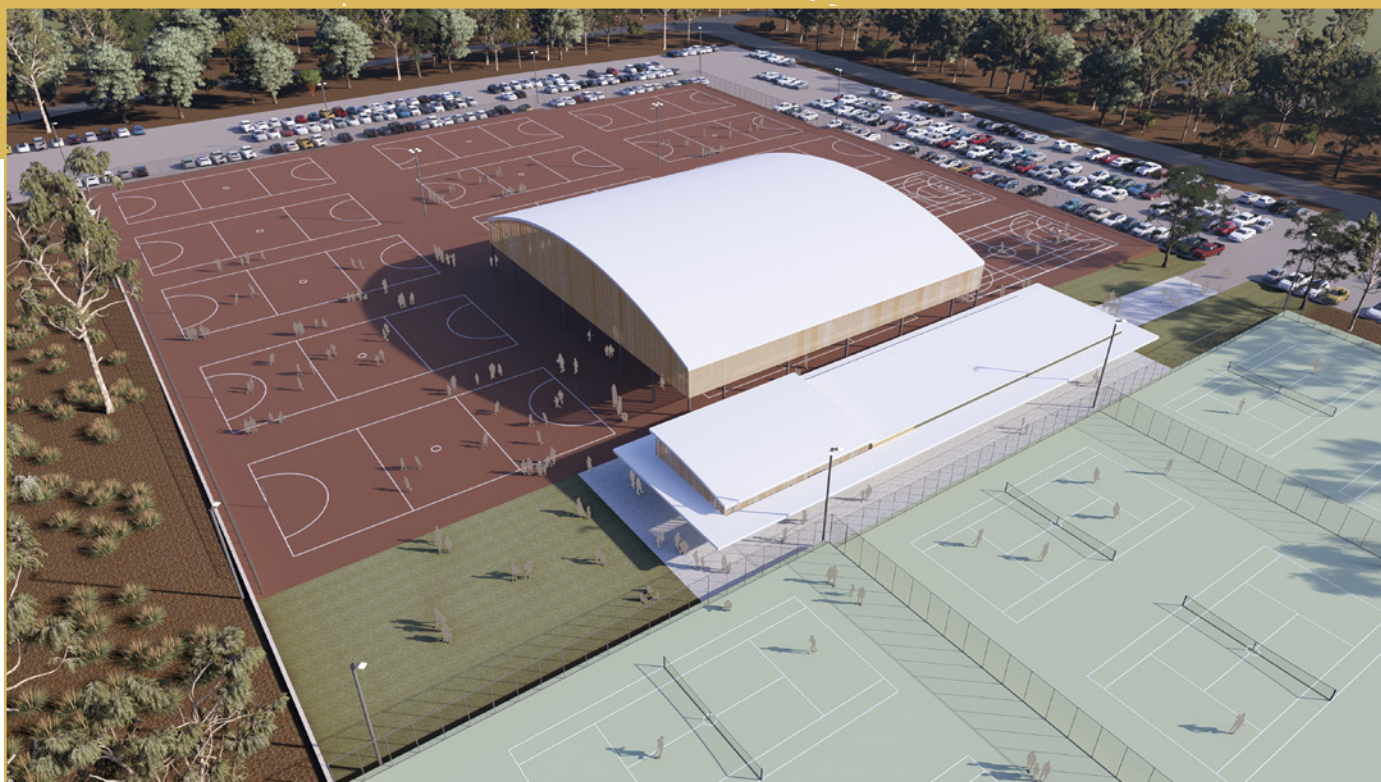
Advocacy 2025

15 Netball Courts and Change Rooms

A new home for netball at the Keirnan Park Recreation and Sporting Precinct



Planning for
the *future*



The Shire's current netball court and facility provision is not suitable or sufficient for current and future demand with many families travelling out of the Shire for games.

The delivery of 15 new netball courts, pavilion, floodlights, car parking and change rooms at Keirnan Park are essential to support the rapid growth of the sport for the following reasons:

- **Increased participation** As netball gains popularity, the existing facilities are becoming overcrowded, leading to scheduling conflicts and limited access for players of all levels.
- **Encouraging growth** Upgrading and expanding facilities will accommodate future growth, fostering more community involvement, developing local talent, and hosting larger competitions and events.
- **Inclusivity** More courts and updated change rooms will offer equitable opportunities for both juniors and seniors, making the sport accessible to a wider range of participants, including those from diverse backgrounds.
- **Improved player experience** Modern, well-maintained courts and change rooms will enhance the overall experience for players and spectators, promoting comfort, safety, and a professional environment.



How can you work with us?

We're seeking \$40.4 million to help realise our community's vision for modern, contemporary netball courts and change rooms.



Advocacy 2025

Jarrahdale Trails Centre



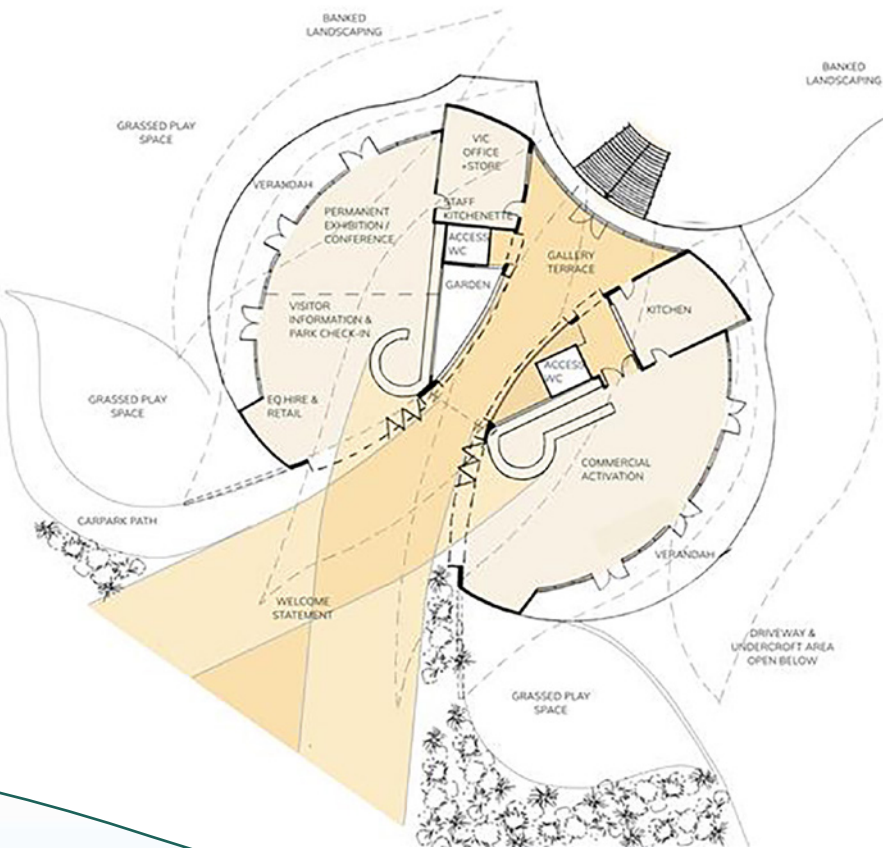
Delivering a world-class visitor experience in Jarrahdale

Jarrahdale's rich heritage, including timber production, railway history, and stunning natural landscapes, has left a lasting mark on the region.

Today, Jarrahdale is known for its national parks, scenic trails, and heritage-listed sites, offering visitors a unique glimpse into Western Australia's past.

A dedicated visitor centre would serve as a gateway to unlocking Jarrahdale's tourism potential by providing essential information, guided experiences, and promoting local businesses.

The centre would enhance the visitor experience, increase awareness of the town's cultural and natural attractions, and foster sustainable tourism growth, making Jarrahdale a key destination for history enthusiasts and nature lovers alike.

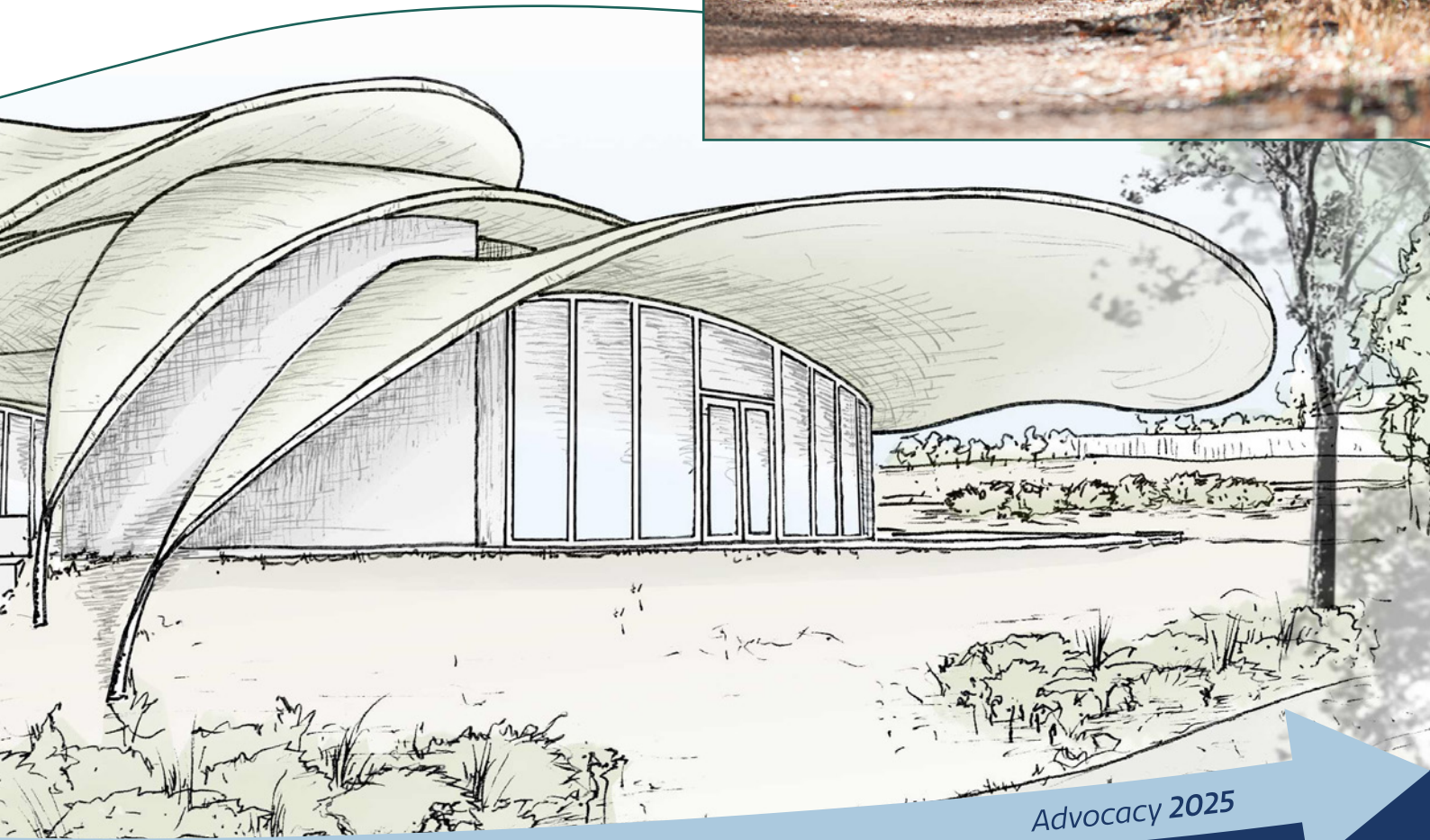


Planning for
the *future*



How can you work with us?

We're seeking \$10 million to deliver Stage One of the Jarrahdale Trails Centre.



Advocacy 2025



Election priorities and requests - Executive Summary

<p>Road upgrades: Nine priority roads, prioritised using crash data, road condition and current and future traffic volume considering the Tonkin Highway extension.</p> <p>Kargotich Road - Abernethy Road Intersection Kargotich Road - Orton Road Intersection Kargotich Road - Gossage Road Intersection Kargotich Road – North of Mundijong Road Hopkinson Road Nicholson road Abernethy Road Orton Road Gossage Road</p>	<p>\$44.2m</p> <p>\$6.83m \$5.41m \$4.82 \$7.0m \$2.6m \$1.9m \$5.8m \$4.7m \$5.1m</p>
<p>SJ Community Recreation Centre: Expansion of centre to deliver two additional indoor courts, upgraded change rooms, gym, group fitness space and after school care.</p>	<p>\$43.77m</p>
<p>Netball courts and pavilion: Delivery of 15 new netball courts, pavilion, floodlights and car parking at Keirnan Park, the Shire's new regional sporting precinct. <i>*Optional first stage of six new netball courts, pavilion, floodlights and car parking is \$28.6m.</i></p>	<p>\$40.4m</p>
<p>BMX track and pavilion: Delivery of a new BMX track, pavilion and car parking at the Shire's new regional sporting precinct, Keirnan Park.</p>	<p>\$12.5m</p>
<p>Jarrahdale Trails Centre: Delivery of a high-quality trails centre to position Jarrahdale as a global tourism destination, with significant regional economic benefits.</p>	<p>\$10m</p>
<p>Fire Station upgrades: Byford Fire Station Oakford Fire Station</p>	<p>\$500,000 \$2m</p>



Shire of
Serpentine
Jarrahdale

6 Paterson Street, Mundijong
Western Australia 6123

Paul Martin – Chief Executive Officer

t: 0417 670 047 **e:** pmartin@sjshire.wa.gov.au