

Byford Rail Extension Thomas Road over Rail project

Relocation of services

Preliminary works are well underway to divert and relocate power, water and communications services infrastructure within the Thomas Road over Rail project area.

Ensuring these utility services are protected is a critical step in any major project and will allow construction works to get underway safely and reduce the potential of unexpected service disruptions during the build.

A closure of Thomas Road between Plaistowe Boulevard and South Western Highway is required to enable a safe work zone for water infrastructure relocation, rail level crossing relocation and completion of the temporary road alignment.

Closed: Thomas Road between Plaistowe Boulevard and South Western Highway

- **7am Saturday 17 July to 5am Monday 26 July**
- Detour via Hopkinson Road and Abernethy Road (southern detour route)
- Detour via Tonkin Highway and Armadale Road (northern detour route)
- Oversize Vehicles to use the northern detour route.

Please see the detour maps on pages 3 and 4

While this closure is in place, Thomas Road traffic will be encouraged to follow the signed detour routes.

Signage will be in place and traffic management will be present to ensure access for local traffic is maintained throughout the closure.

Temporary road for Thomas Road traffic

- **From 5am Monday 26 July**
- Speed reduction to 40km/h

A temporary road along the southern boundary of Thomas Road from Wungong South Road to Butcher Road will be open from 5am Monday 26 July for a significant duration of the project to position traffic away from the footprint of the permanent bridge alignment.

The temporary road will reduce the impact of construction on road users as fewer traffic stages will be required to build the new bridge structure.

Community information sessions

Online information session:

- **Thursday 22 July, 6pm to 7.30pm**
- To share the design
- Provide update on the Thomas Road over Rail and broader Byford Rail Extension project.
- Ask questions to the project team.

Please register your interest to attend via email to project Community Relations Coordinator natalie.akili@armadaleaccess.com.au.

Drop-in sessions:

- **Monday 2 August, 4pm to 5.45pm** at the Byford Town Hall, 9 Clifton St, Byford WA 6122
- **Thursday 5 August, 4pm to 6pm** at the Serpentine-Jarrahdale Recreation Centre, Mead St, Byford WA 6122

The drop-in sessions are scheduled following the online information session to answer any questions that remain unanswered. Everyone is welcome to drop-in to the sessions and registration is not required.

Project milestones

- Design completion – mid 2021
- Rail bridge commencement – late 2021
- Switch first traffic onto new alignment – late 2022
- Project completion – early 2023

Vegetation clearing

The new road configuration requires clearing of primarily non-native vegetation for the bridge and associated works. We endeavour to retain as much vegetation as possible and minimise our impact on the environment.

The project's environmental impact has been assessed and environmental approvals to clear the vegetation are in place.

We are currently investigating opportunities to recycle the cleared materials within the community surrounding the project, with a priority to reuse the timber on local projects. Woodchippers will be used onsite to reduce tree waste for landscaping.

Vegetation clearing is scheduled to take place in August following the opening of the temporary road, with the local community to be notified in advance of any significant activity.

Managing construction impacts

Throughout this project, some construction activities may result in noise, dust and vibration. Managing these impacts is of high importance and being undertaken in accordance with the project's Environmental Management Plan.

Specialised monitoring equipment has been installed near the construction site to measure dust, noise and vibration levels. The data received from the monitors allows the project team to identify elevated levels of dust, noise and vibration and proactively implement control measures to ensure minimal impact on residents, as well as compliance with environmental regulations.

Noise levels are continuously monitored to ensure that allowable sound levels are not exceeded, and water carts and dust stabilising agents are used to prevent dust kick up.

Where possible, works are planned to ensure minimal impact, with the majority of construction work happening between 7am and 7pm, Monday to Saturday.

For the safety of road users and construction workers, and to minimise disruption to peak daytime traffic, some work will be completed at night. Advance notification will be provided to impacted residents.

Property condition surveys

Invitations to undertake property condition surveys were distributed to all properties within 100m of the construction zone. If you received a notice and are yet to respond, **you are still able to accept this offer.**

The property condition survey is designed to safeguard you and your property in the unlikely circumstance that it is adversely affected by construction.

We strongly encourage you to take up this offer - all costs for the inspection are covered by the project. It is difficult to assess any future damage claim on your property against the project without a property condition survey showing the pre-construction condition.

METRONET Byford Rail Extension

A competitive bid phase is currently underway with two shortlisted proponents progressing designs and costs for the project, which will see the Armadale Line extended approximately 8km south to a new station in Byford.

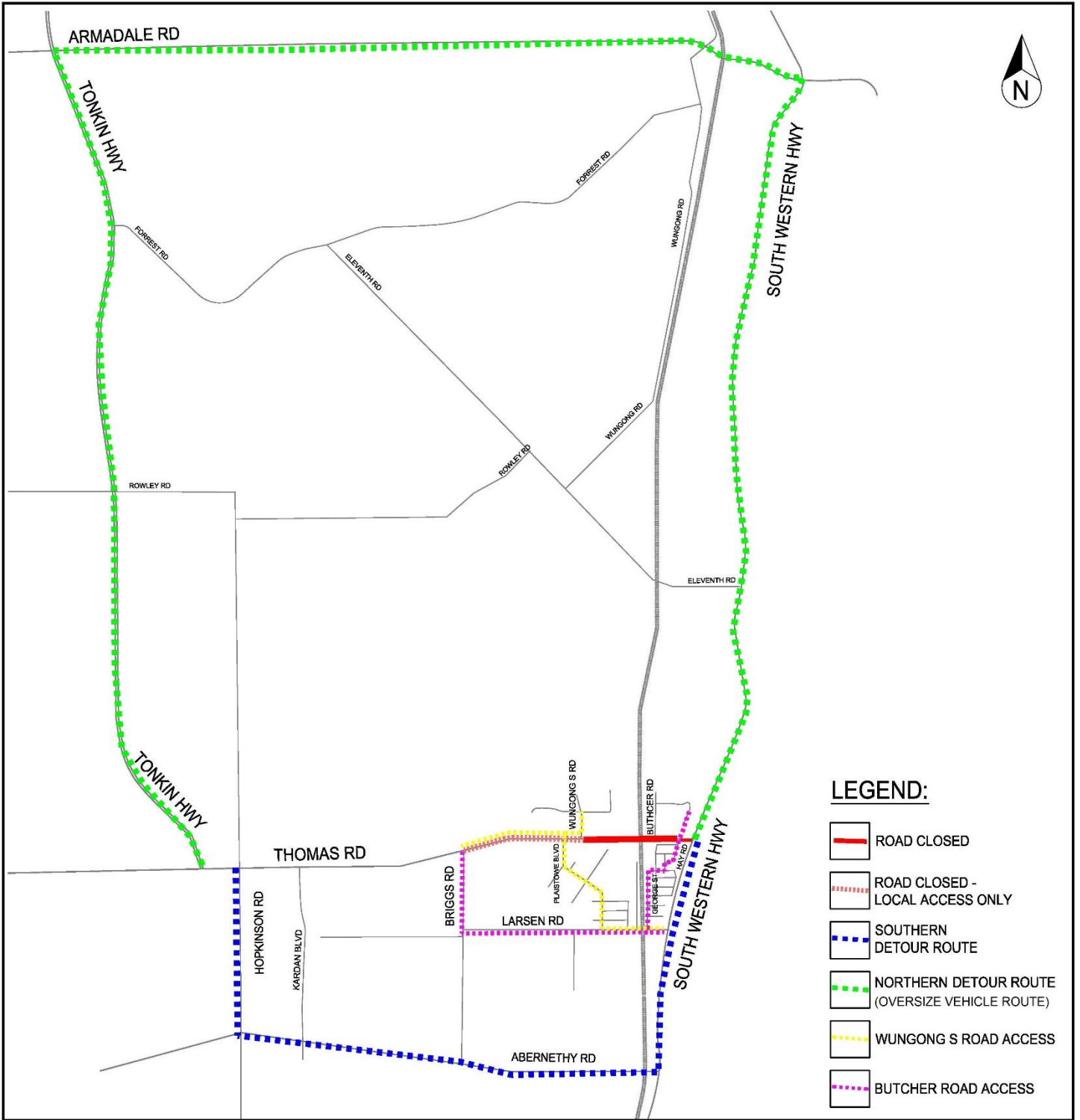
The removal of level crossings between Armadale and Byford is also considered in the project scope, including the potential of elevated rail in the Byford town centre.

The final shape of the Byford Rail Extension project will depend on feasibility and cost. A contract is expected to be awarded later this year.


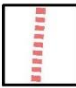
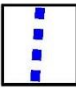

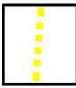
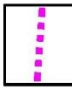
Further information

For the latest information on the Thomas Road over Rail project, visit www.mainroads.wa.gov.au/thomas-rd-rail, contact Main Roads on 138 138 or email us at enquiries@mainroads.wa.gov.au.

This project is being delivered as part of early works for the METRONET Byford Rail Extension, which will extend the Armadale Line around 8kms south to Byford. For more information [visit the METRONET project page.](#)



LEGEND:

-  ROAD CLOSED
-  ROAD CLOSED - LOCAL ACCESS ONLY
-  SOUTHERN DETOUR ROUTE
-  NORTHERN DETOUR ROUTE
-  WUNGONG S ROAD ACCESS
-  BUTCHER ROAD ACCESS

