

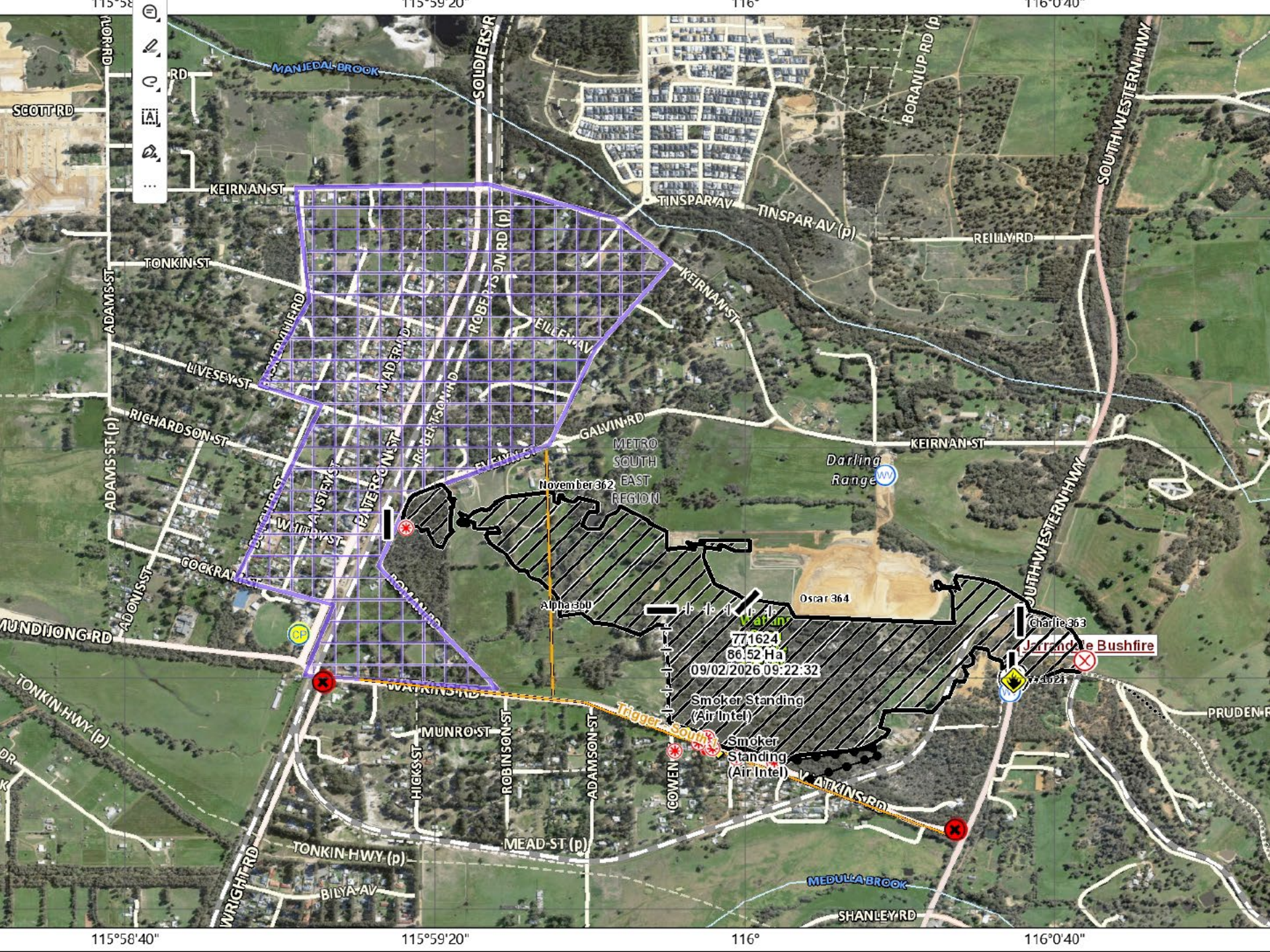


Shire of
Serpentine
Jarrahdale

Mundijong Bushfire Community Debrief

4 March 2026





115°58'40"

115°59'20"

116°

116°0'40"

Legend:

- 📍 (Location pin)
- 📏 (Scale bar)
- 📐 (Grid overlay)
- 🗺️ (Map icon)
- ⋮ (More options)

Metro South East Region

Darling Range

Alpha 360

Oscar 364

771624
86152 Ha
09/02/2026 09:22:32

Smoker Standing (Air Intel)

Smoker Standing (Air Intel)

Charlie 363

Jarrendale Bushfire

771624

Trigger South

Medulla Brook

Shanley Rd

Scott Rd

Keirnan St

Tonkin St

Livesey St

Richardson St

Cockran St

Mundijong Rd

Tonkin Hwy (p)

Tonkin Hwy (p)

Bilya Av

Soldiers Rd

Roberts Dr (p)

Leileen Av

Galvin Rd

November 362

Alpha 360

Watkins Rd

Munro St

Hicks St

Robinson St

Adamson St

Mead St (p)

Tinspar Av

Tinspar Av (p)

Keirnan St

Reilly Rd

Boranup Rd (p)

South Western Hwy

Keirnan St

South Western Hwy

Pruden Rd

Incident timeline

- First 000 calls at 12:43am, 9 Feb reporting a fast-moving fire
- Initial response included three brigades and two Deputy Chiefs
- First on scene: 12.56am Deputy Chief Jason White, followed by three brigades
- Fire had crossed Southwestern Highway with intense behaviour
- Jason White established as Incident Controller
Operations Officer, Nathan Houweling

Escalation and Resourcing

- Emergency Warning issued at 1:26am for surrounding areas
- Additional 22 appliances requested within 30 minutes
- Over 40 appliances deployed by 3:30am
- Forward spread stopped by 4:30am near Roman Rd
- Final burn area approx. 89 hectares
- Suspected cause: stolen vehicle; WA Police investigating

Fire Behaviour

- Estimated rate of spread - 1.2 km/hr
- Spotting distance – 150-200m ahead of fire front
- Impacted private property, Shire land, and DBCA reserves
- Controlled burn required in Watkins Road Nature Reserve
- Early ecological recovery already visible



Damage and Environmental Impacts

- Damage included garden areas, fences, and minor building guttering
- Removal of a structurally unsafe palm tree
- Former landfill site ignited - treated as HAZMAT
- Contractor engaged for safe extinguishment and monitoring

Public Warnings and Community Impact

- Emergency Warnings and Watch & Act alerts issued as conditions evolved
- Close coordination with DFES Media for accurate updates
- Byford CRC evacuation centre opened, approx. 20 attendees
- Evacuation centre open 4am, closed by midday Monday
- Bushfire Awareness Team available for community support after briefing

Supporting Agencies

- Strong support from volunteer brigades, DFES, FRS, and DBCA
- Shire handed operational control to DFES due to scale
- Department of Communities operated evacuation centre
- Department of Justice Section 95 crews assisted with hazardous tree work

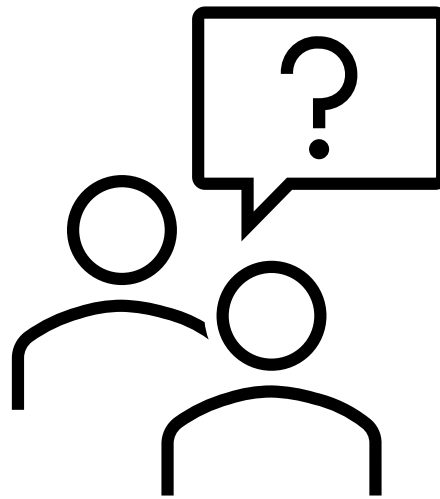
Key Operational Takeaways

- Rapid recognition of threat by first crews
- Early warnings and resource escalation minimised property loss
- Strong cooperation between community, private units, and IMT
- SES assisted with controlled resident re-entry

Recovery Efforts

- Western Power restored infrastructure once safe, Watkins Road last to reopen
- Shire and DBCA working on track repairs, fencing, and land rehabilitation
- Focus on supporting affected landowners and stabilising impacted areas

Question time





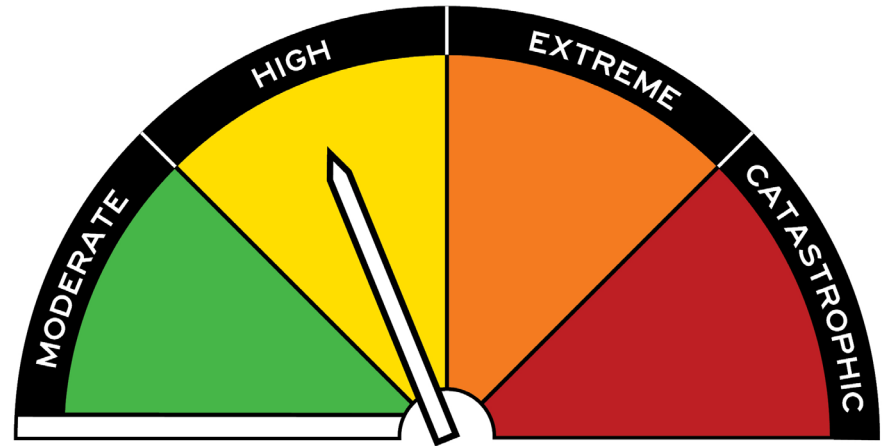
FOR A SAFER STATE

Understanding the Australian Fire Danger Rating System

Fire Danger Ratings

Fire Danger Ratings describe the potential level of risk should a bushfire start.

Understanding the Fire Danger Rating (FDR) system enables you to assess your level of bushfire risk and decide what actions to take.



FIRE DANGER RATINGS

MODERATE	PLAN AND PREPARE
HIGH	BE READY TO ACT
EXTREME	TAKE ACTION NOW
CATASTROPHIC	LEAVE BUSHFIRE RISK AREA

Now there's a simple warning system for natural disasters.



ADVICE



**WATCH
AND ACT**

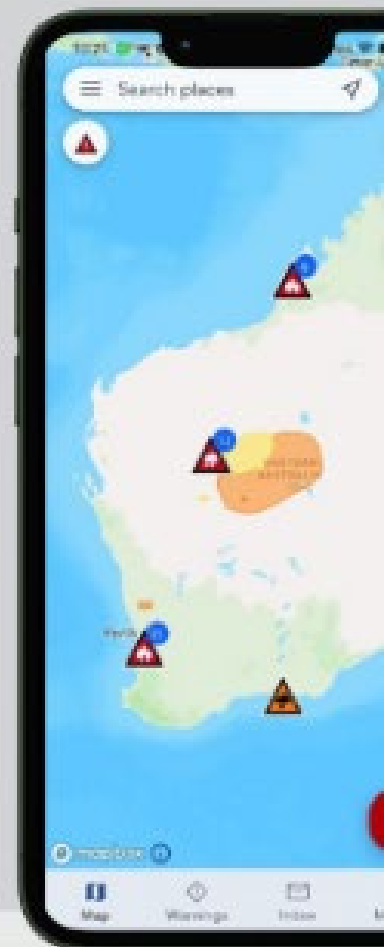
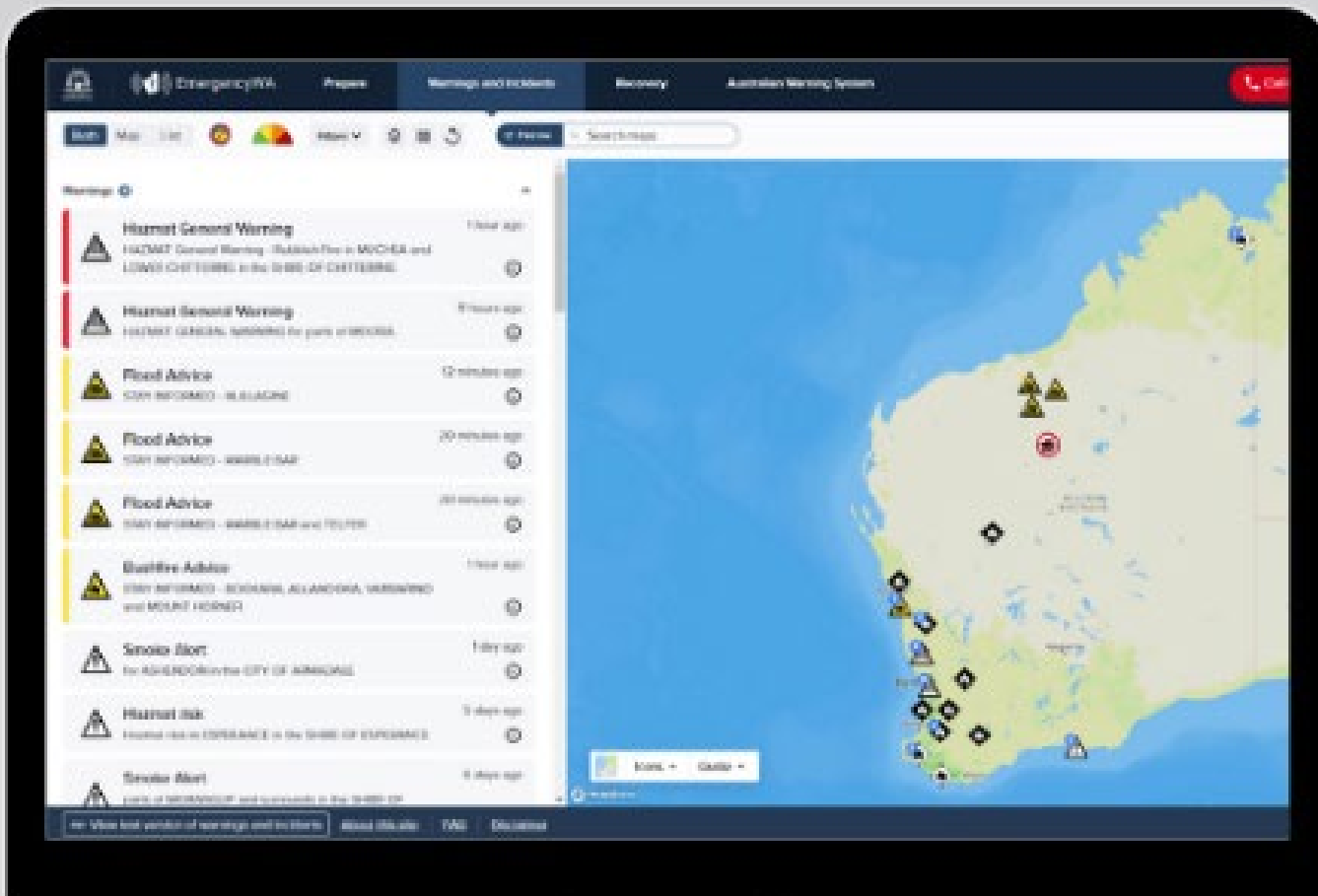


**EMERGENCY
WARNING**

Get to know it

[🔍 Emergency WA](#)

Understanding the Australian Warning System and using Emergency WA



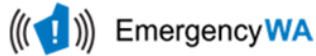
Using Emergency WA

Emergency WA - One Source Of Truth



<https://youtu.be/ahJRPnIRXsA?si=CeSGr9r3DdPxQNbC>

Bushfire Warnings System Emergency WA



The following alert has been issued by the Department of Fire and Emergency Services (DFES).

This is an emergency broadcast. It is essential that the words are not changed.

This is a new alert.

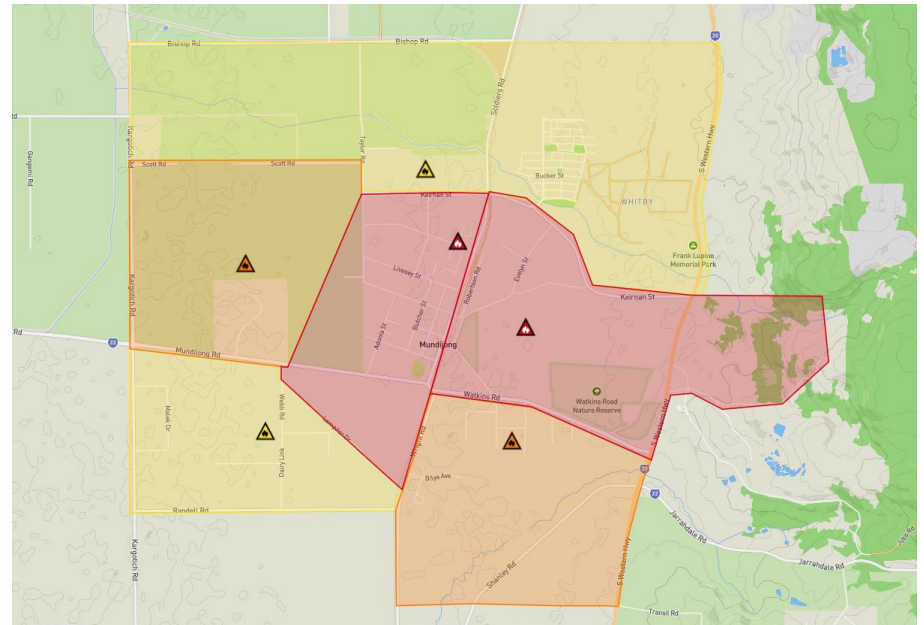
Time of issue: 01:45 AM

Date of issue: 09 Feb 2026

Bushfire Emergency Warning - LEAVE NOW - MUNDIJONG and WHITBY

A Bushfire Emergency Warning is in place for people in the area bounded by Keirnan Street, Watkins Road, Paterson Street and Pruden Road in MUNDIJONG and WHITBY in the SHIRE OF SERPENTINE-JARRAHDALE.

- You are in danger and need to act immediately to survive. There is a threat to lives and homes.



www.emergency.wa.gov.au



DFES
Department of Fire &
Emergency Services



DFES
Department of Fire & Emergency Services

FOR A SAFER STATE

Planning For Bushfire



ADVICE



WATCH
AND ACT



EMERGENCY
WARNING

Get to know it

HOW TO BECOME BUSHFIRE READY?



Know your risk

If you live near bush or travel through bush you are at risk of bushfires.



Have a plan

Prepare a bushfire survival plan that outlines what you will do if a bushfire occurs and practice it regularly with your family.



Have an emergency kit

Prepare a bushfire survival kit that includes a radio, spare batteries, torch, first aid kit, woollen blankets, non-perishable food and water.



Know your warnings

Know and understand the bushfire advice, watch and act and emergency warning alerts issued by Fire and Emergency Services. Stay updated via emergency.wa.gov.au



Know your neighbours

Keep in touch with your neighbours during the bushfire season.

Planning for Bushfire

There are two main tools you can use to help you create your bushfire plan.

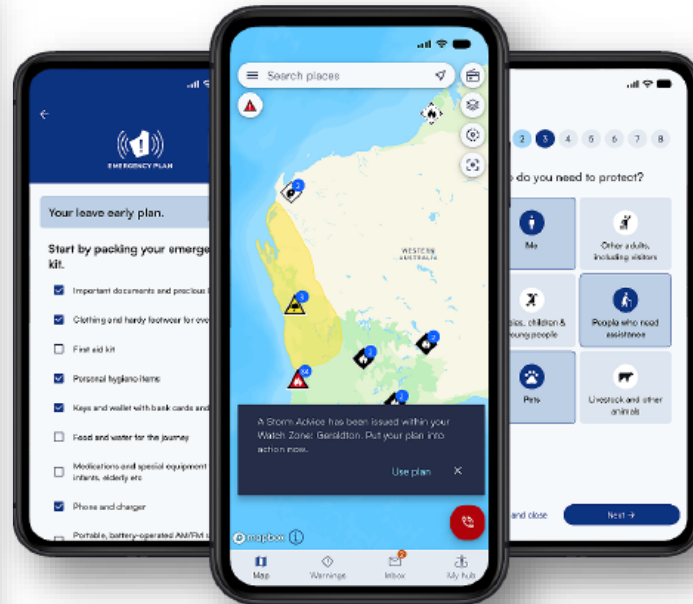
- Emergency WA app
- Bushfire Preparation Toolkit



THE EMERGENCY WA APP IS HERE!

- > Set custom watch zones
- > Receive push notifications relevant to you
- > Access a live feed of incidents
- > Get official emergency information, fast

DOWNLOAD THE APP



Bushfire Preparation Toolkit

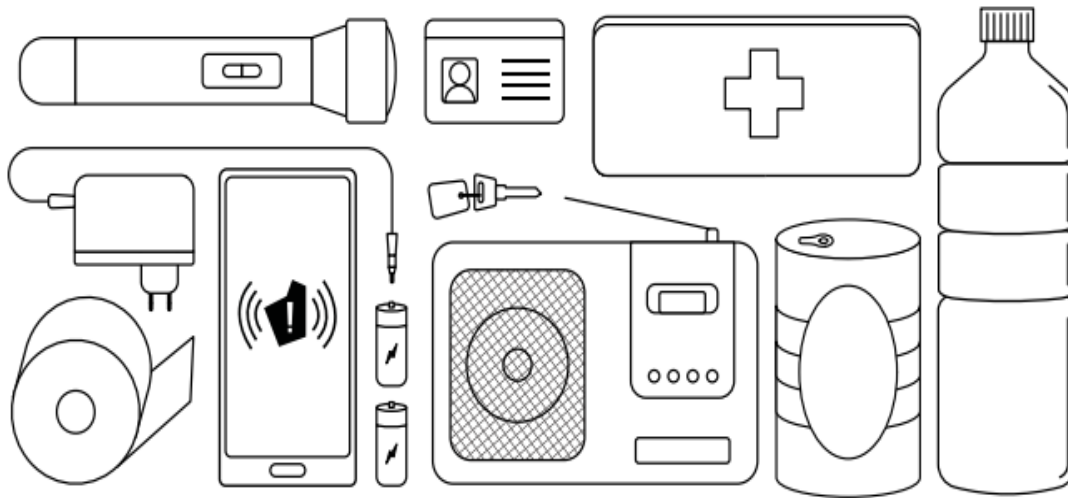


Packing an Emergency Kit



EMERGENCY KIT INFORMATION

An emergency kit provides essential items for your short term survival and should be stored in an easy-to-grab place.



Make sure your emergency kit is well stocked with essential items.

Preparing an emergency kit can save precious time during an emergency.

- If your plan is to **be safe and leave early**, you may be away from home for several days.
- If your plan is to be prepared to **stay and defend**, you may lose access to utilities like power, gas or water.



DFES
Department of Fire &
Emergency Services

FOR A SAFER STATE

Finding reliable information during a bushfire

Finding information during a bushfire



Emergency WA



DFES Facebook



Call 13 DFES: **13 3337**



Listen to **ABC local radio**



Bureau of Meteorology



Main Roads WA or call **138 138**

GET YOUR
**EMERGENCY
INFORMATION**
STRAIGHT
FROM THE
SOURCE

Wednesday 11 December
3:04
Bushfire Advice
Monitor conditions -
COCKBURN CENTRAL
Home
6m ago
No Older Notifications

GOVERNMENT OF
WESTERN AUSTRALIA
DFES
Department of Fire &
Emergency Services
EmergencyWA



DFES
Department of Fire &
Emergency Services

- Create a bushfire plan with all members of your household.
- Pack your emergency kit
- Prepare your property
- Get familiar with the **Emergency WA** website,
www.emergency.wa.gov.au



Want more? Chat to us about joining a Bushfire Ready Group – a community led program that helps neighbours to work together to prepare and protect their families and properties from bushfire.



DFES
Department of Fire &
Emergency Services

FOR A SAFER STATE

**If you take away one
thing...**