

Byford Bike Pump Track Public Art Project

Request for Proposal:	Byford Bike Pump Track
Deadline:	Monday 22 nd September 2025
Delivery Method:	Request for Proposal submissions are to be lodged via email to info@sjshire.wa.gov.au Late submissions will not be accepted
Contact Person:	Luisa Gaviria Community Development Officer

CONTENTS

Introduction.....	3
Background	3
Themes.....	4
Location	5
Concept	9
Commission Process	10
Criteria	11
Implementation Timeline.....	12
Budget	12



Introduction

The Shire of Serpentine Jarrahdale is pleased to invite expressions of interest from artists experienced on designing and creating public artwork for the footpath crossing at the new Byford Bike Pump Track.

As part of the Shire's commitment to community engagement artists are required to incorporate a collaborative element involving local youth into a portion of the final artwork. This component should offer a hands-on, creative experience for participating youth and reflect their voices in a meaningful way—fostering a deeper connection to the site and a lasting sense of pride and belonging.

Located at Briggs Park on Gordin Way, Byford, this dynamic new recreational space will serve as a hub for young people to engage in physical activity and social connection. The artwork will be located on the raised footpath crossing and the footpath connecting to the bike park, adding a splash of vibrancy and enhancing the overall aesthetic of the area. We invite artists to create a piece that reflects the spirit of youth, movement, and community, contributing to a lively and inspiring environment for young people.

Background

The Byford Bike Pump Track will be the first pump track in the area and will be a place where young people can safely practice their bike or scooter skills. Construction works are planned for completion at the end of October 2025.

The pump track will include a jump line for intermediate users, shade shelters, street furniture and will complement the Byford Skate Park Precinct (extensions also are currently in progress to the Skate Park and due to be completed end 2025.)

The two sites will surround the Shire's Youth Centre and will be a hub for young people to socialise and be active. The Byford Bike Pump Track project is funded by the State Government through the Department of Creative Industries, Tourism and Sport.



Themes

The Artist is to develop artworks that are consistent with the objectives and themes as outlined in the Shire of Serpentine Jarrahdale [Public Art Strategy & Public Art Masterplan 2019-2023](#). 2 of the 3 overarching themes identified in the Strategy are applicable. Either or all can be utilised:

Theme One – Natural Environment

The Shire's natural environment is central to community well-being, offering opportunities for relaxation, healing, and connection. Residents and visitors value the bushland and its unique flora and fauna, from rare species at Brickwood Reserve to Serpentine Falls and local wildlife habitats. Preserving these assets is vital for future growth and cultural identity. Public artworks are encouraged to be site-specific, reflecting local textures, colours, and forms, and may include ephemeral or kinetic elements inspired by wind, light, and nature, celebrating the deep connection between people and place.

Theme Two - Belong

Belonging is a fundamental need shared across cultures, the foundation for a community to thrive. It can be expressed through deep connections to physical locations (heritage, culture, people); through memories (stories, ideas), as well as shared aspirations. Public art developed for a purpose can shift public perception by making a place more welcoming and informing new ways to engage with it.

Theme Three - Playfulness

Playfulness is essential in the development of a healthy community. Universally, it contributes to the cognitive, physical, social, and emotional well-being of children as well as adults. Artwork in public places has a special ability to mobilise community to explore, express and grow unique cultures - through forms that delight or challenge, using humour or drama.



Location

Briggs Park, Gordin Way, Byford WA, south of the Shire of Serpentine Jarrahdale Youth Centre and Byford Skate Park Precinct (also under construction/extension).

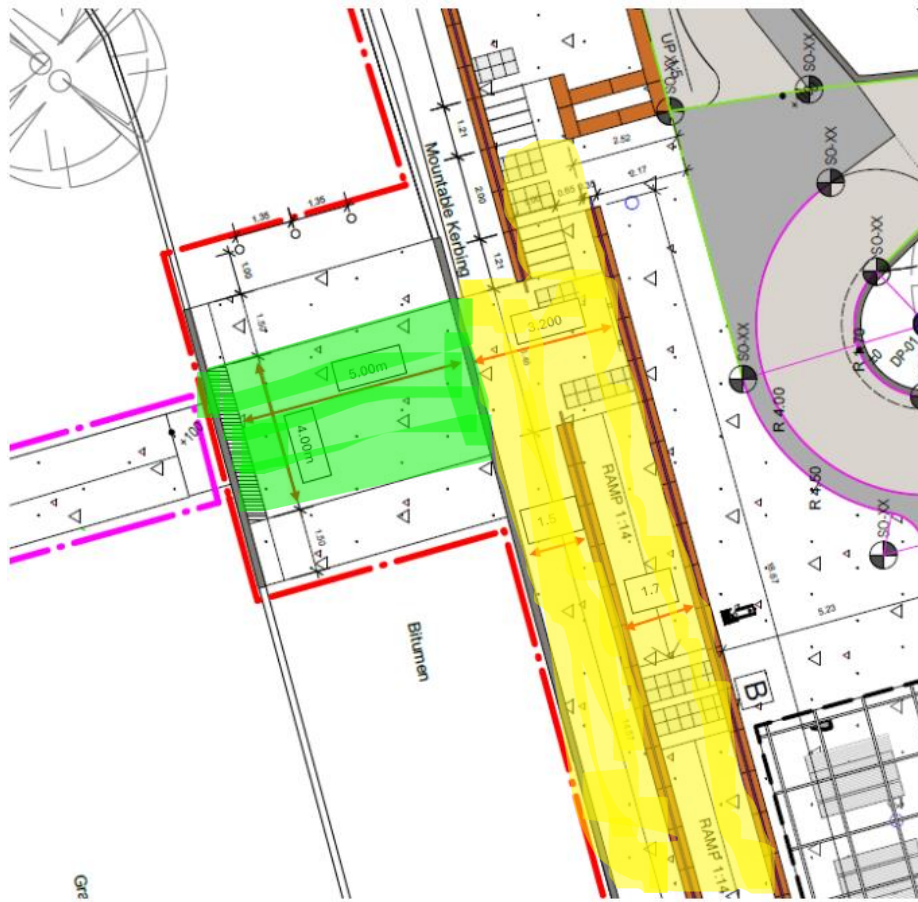


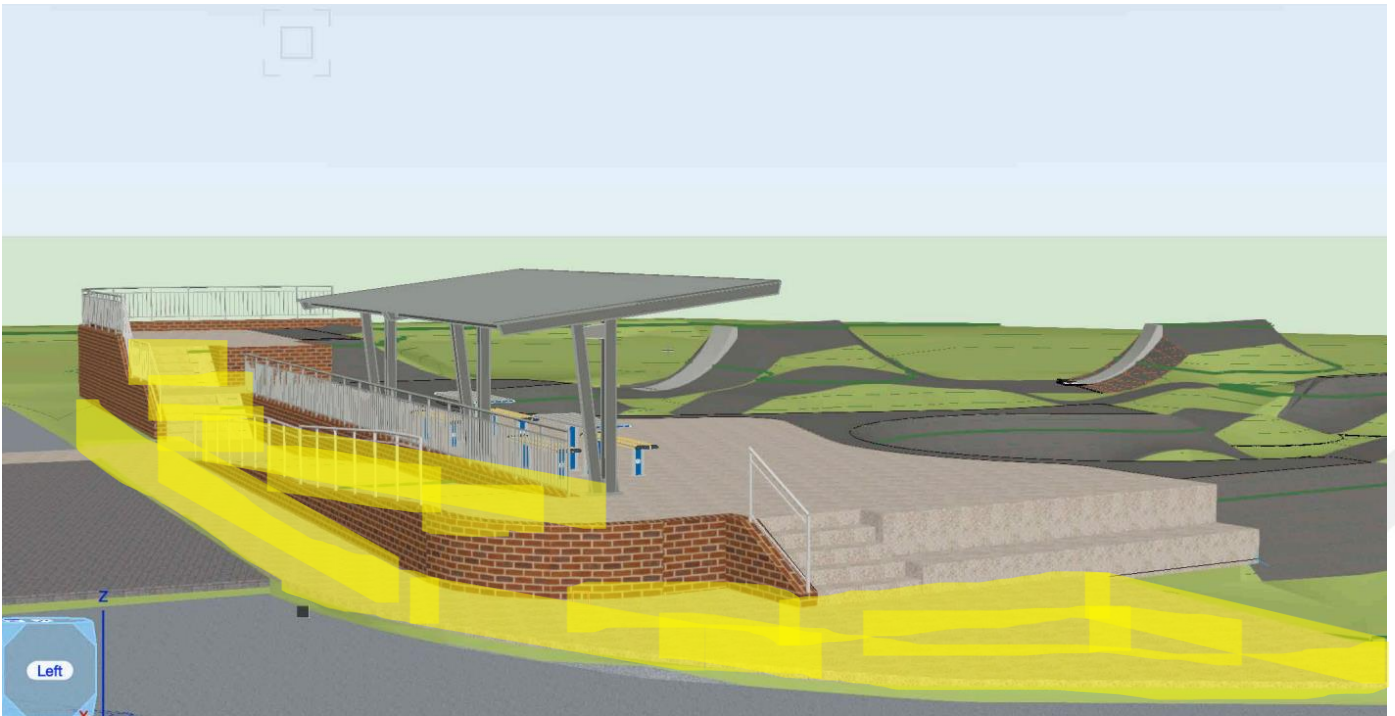
Artwork Opportunity Area

The work area includes the raised footpath platform (pedestrian crossing) and portions of the footpath and ramps leading to the bike facility, as determined by the artist.

- **Primary Area:** The raised footpath platform (pedestrian crossing), shown in green.
- **Secondary Area:** The area shown in yellow, where the artwork may be extended. The artist is encouraged to create a design that covers the primary area and, if possible, incorporates elements extending into some or all of the secondary area, where possible.







Concept

In accordance with Shire's Public Art Strategy, the broad vision for the artwork/s is:

- An artwork tailormade to the location that enhances the community's spirit.
- Integrates with the existing urban environment; and
- Contributes to the Shire wide public art collection.

Supporting Principles:

- **Enjoyment** – Enhancing the experience of public areas within Shire of Serpentine Jarrahdale, fostering a sense of place-based pride, and acknowledging the distinctive qualities of the shire and creating an aesthetically stimulating environments.
- **Activation** – Enhancing the Shire of Serpentine Jarrahdale's existing assets and assisting leading proponents of creative placemaking in their efforts to develop new settings in response to the needs and goals of the community.
- **Integration** - where public art plays an intentional and integrated role in place-based community planning and development.
- **Capacity building** -Artists and residents can foster richness and diversity of outcomes when participating in public art opportunities. These opportunities promote equity and inclusiveness and can generate leaders in the art and cultural field.
- **Memorable** - Desirability of the Shire of Serpentine Jarrahdale as a place to live and work can be strengthened through memorable events, activities, and landmarks.

Note: Conceptually, there is one continual artwork opportunity area as identified in the image above. The artwork is to be applied to the new concrete pavement surfaces and the area selected for development and implementation must be achievable within the available budget.

The Artist is to be aware that the works area is on a surface which is trafficable by vehicles and due to wear and tears and fading. The artwork is likely to have to be replaced within a 5-year period and/or repainted. The artist should consider this and the level of complexity to the artwork to be repainted.

Commission Process

Stage 1: Expression of interest

Respondents are requested to provide a response outlining ONLY the following information on the project:

- 1) Relevant experience of previous projects including examples.
- 2) Capability of delivery of milestones and timeframes.
- 3) Demonstrated understanding of the project including themes and concept (note: a full concept design is not required at this Stage).
- 4) Examples of collaborations with community members with young people or other community consultation.
- 5) Quote (costs are to include the following):
 - Preparation of site – the concrete will be newly installed and brushed finished and unsealed.
 - Provision of all relevant PPE and equipment to deliver the project.
 - Development and completion of the Artwork Opportunity Area within the available budget. Shire's preference is to use Streetbond 150 product, however if the artist proposes to use a different product, the artist must list this in their submission, for Shire's consideration.
 - Anti-graffiti coating (in accordance with the manufacturers specifications e.g. non-sacrificial and non-slip).
 - Public liability insurance.
 - Site visits and meeting with Shire Officers.



Stage 2: Concept Development

Three artists will be shortlisted and will be asked to **develop an artwork concept/ Concept design**. Each will be paid a **\$500 ex GST** commission fee for this work, regardless of how many concepts they develop. One artist will be commissioned from the shortlisted artists to deliver the project.

Note: The three concept designs will be presented at the Youth Centre as part of the project's community engagement process. Young people will be invited to provide feedback on a preferred option. Please note that this consultation will help inform the decision, however the final outcome will be determined by a Shire panel.

Criteria

The final selected art piece from the shortlisted artists will be based on the following criteria:

- The artist has previous experience with similar projects.
- The artist has the capability and experience to engage with youth and incorporate a collaborative portion of art into the final art piece.
- The artist has responded to the brief correctly and demonstrated a clear understanding of the project objectives.
- The quality and creativity of the proposal is of a high standard.
- Youth feedback on the designs.

Ownership of the artwork, and all rights associated with the artwork become the property of the Shire of Serpentine Jarrahdale upon installation of the artwork.

The artwork will be procured via the Arts Law Public Art Design and Commission Agreement.

Implementation Timeline

Milestone	Date
Expressions of interest closing date	Monday 22 September 2025
Shortlisted artists advised	By Monday 29, September 2025
Concept Development closing date (shortlisted artists only)	Monday 20 October 2025
Selected artist notified	by 24 October 2025
Site available for artwork to commence	Anytime from Monday, 3 rd November 2025 and onwards
Artwork Project Completion	November 2025

Note: Please specify the delivery dates you are able to commit to.

Budget

A total budget of \$15,000 ex GST is available for this commission. This budget covers all materials, insurances, collaborative expenses with the school children and installation costs.

