

Federal and State Government Election: priorities and requests



Shire of
Serpentine
Jarrahdale

Acknowledgement of Country

The Shire of Serpentine Jarrahdale acknowledges that the land of the district is the traditional country of the Noongar people. We recognise their cultural heritage, beliefs, and continuing relationship with the land, and pay our respects to elders past, present and emerging.



Shire President foreword

I am honoured to present the Shire of Serpentine Jarrahdale's Federal and State Election Priorities and Election Requests.

As one of the fastest growing local governments in Western Australia and a key growth area in the nation, we are experiencing an astounding population growth of nearly four new residents joining our Shire every day. By 2036 our population is projected to double to nearly 70,000 residents, and this number is expected to grow to 130,000 by 2050.

Our rapid growth offers both exciting opportunities and substantial challenges. Despite our traditional revenue sources and developer contributions, it is evident that we cannot single handedly meet the increasing demands for infrastructure to support our growing community. The Shire acknowledges the importance of forming partnerships to transform these critical projects into reality, thereby delivering essential social, environmental, and economic advantages for not only our local residents but also for the broader Peel region and the entirety of Western Australia.

At the heart of our mission lies the wellbeing of our residents. We are dedicated to providing them with the quality of life they rightfully expect when choosing to make Serpentine Jarrahdale their home. Through extensive community engagement and strategic, long-term planning, we have

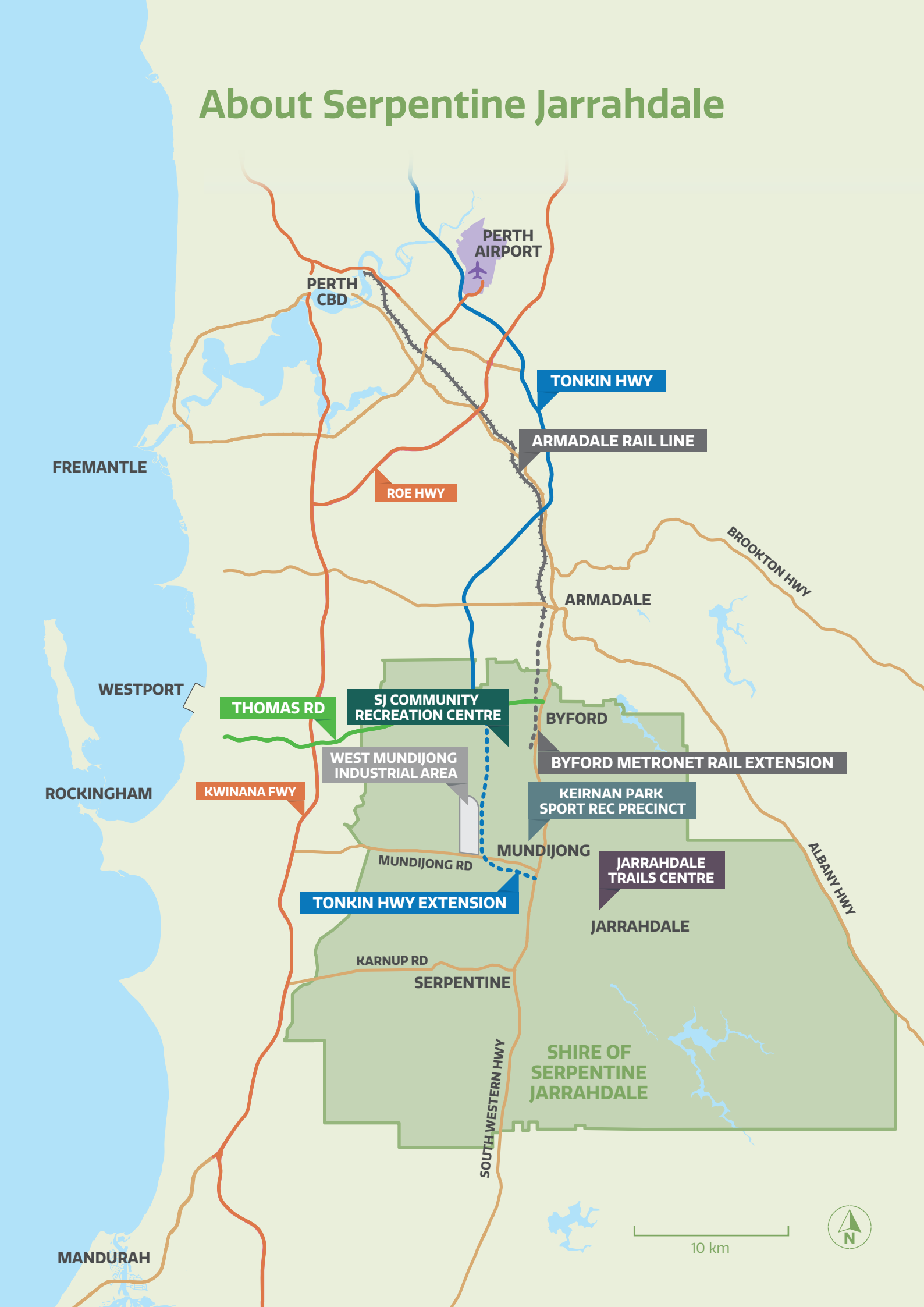
carefully developed a new Corporate Business Plan covering the period from 2024 to 2028. This plan outlines our most crucial projects and initiatives, all aimed at safeguarding the interests of our rapidly expanding community. Our commitment to financial sustainability is emphasised by our Long-Term Financial Plan, which provides a detailed road map for the realisation of these projects and initiatives.

In this pursuit, we are reaching out to seek the support and partnership of the Federal and State Governments. We recognise that our aspirations align with the objectives of Federal and State Government Programs, including Infrastructure Investment, Local Roads and Community Infrastructure, Roads to Recovery, Thriving Suburbs and the Metropolitan Regional Road Group funding programs. We hope to establish a mutually beneficial partnership between the Shire of Serpentine Jarrahdale, Federal and State Government, enabling us to continue to meet the needs of a growing nation while ensuring the prosperity of our vibrant community.



Rob Coales
President

About Serpentine Jarrahdale



Planning for the future

The Shire of Serpentine Jarrahdale offers the best of both worlds – being one of Western Australia's fastest growing local government areas while also boasting a wonderful collection of pristine natural attractions.

Serpentine Jarrahdale is growing into a metropolitan hub while still holding close ties to the region's rural and agricultural roots.

We have an exciting future, with hyperpopulation growth in the suburb of Byford bringing new opportunities.

As the population continues to grow at a rapid rate, it's imperative that our local infrastructure, facilities and services develop at the same pace.

There are currently several major projects in the planning or development phase that will help the Shire achieve this goal.

Committed projects for SJ



Tonkin Highway extension

\$755 million



Byford Metronet Rail extension

\$797 million



New Byford Health Hub

\$30.6 million



Keirnan Park Sporting and Recreation Precinct (Stage 1A)

\$20 million



Hyper-Growth Road upgrades

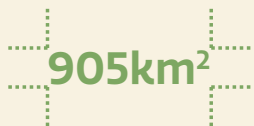
\$18 million



Serpentine National Park upgrades

\$3.2 million

Community profile



905km²

Size of Shire

FASTEST

Growing local government in WA



Suburbs



36,403

2021 Population



2x Nearly 2 families moving to Shire every day



25% Residents born overseas

Economic snapshot



\$950m

Gross Regional Product



2,099

Local Businesses



6,758

Local jobs



17,384

Employed Residents



\$181m

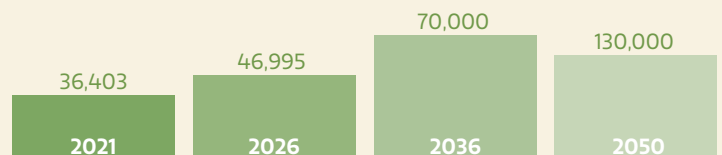
Building approval value for 20/21 FY



80%

Residents leave Shire for work

Population forecasts



Keirnan Park

Sport & Recreation Precinct – 1C

Delivery of netball/multi-use courts

Opportunity:

Delivery of additional multisport facilities at Keirnan Park

Expected outcomes:

- Safe and modern sporting facilities for girls and women
- Meet growing demand for netball and multi-use courts
- Improve participation in sport and recreation

The Keirnan Park Recreation and Sporting Precinct Masterplan has been endorsed for a 65ha site in Mundijong. The Shire is the fastest growing local government area in Western Australia and the precinct is designed to our meet existing and future sporting and recreational needs .

The precinct will provide high quality multisport facilities in a single location, capitalising on the efficiencies of shared infrastructure and catering to modern sporting code requirements.

The State Government has funded the delivery of Stage 1A, which includes AFL and cricket ovals and a shared pavilion.

Masterplanning:

The Keirnan Park Business Case identified the delivery of netball and multi-use courts as part of Stage 1 of Keirnan Park. Growing netball participation and the existing sub-standard netball court facilities mean the Shire's junior and senior netball clubs have to play their competition games outside the Shire. The Shire is currently completing concept design for netball and multi-use courts for Keirnan Park to provide a safer, modern environment for women and girls to play netball.

Funding request for partnership:

The Shire will be undertaking feasibility and detailed costings for this project with an accurate funding request available by June 2024.

Key components:

- Six netball courts (two courts allocated for multi-use – basketball/netball)
- Fencing, lighting and retaining
- Pavilion
- Car parking.

Advocacy alignment:

Population Growth

Education Training and Employment

Financial Capacity



Serpentine Jarrahdale Community Recreation Centre expansion

Delivery of two additional basketball courts

Opportunity:

Delivery of two additional basketball courts at the SJ Community Recreation Centre

Expected outcomes:

- Address fast-growing sporting and recreation needs
- Provide high-quality sporting facilities
- Improve participation in sport and recreation

Forming part of the Briggs Park Masterplan, the Serpentine Jarrahdale Community Recreation Centre is the hub for indoor sport and recreation. The centre currently has two basketball courts available for casual and game use however these courts are at full booking capacity with the Shire often turning people away from active recreation.

Federal and State funding for additional basketball courts at the recreation centre would allow for greater participation in sport, community connection and the ability for youth and other demographics to make greater use of the facilities available in our community.

Masterplanning:

Basketball is one of the most popular indoor sports played in the Shire, with two local basketball clubs supporting more than 800 junior and senior players.

The Shire's population is forecast to grow by over 31,000 by 2036 – an increase of 96% – with significant growth of basketball participation and increased demand for indoor basketball courts. The Shire is currently completing a concept design to increase the number of indoor courts provided at the SJ Community Recreation Centre.

Funding request for partnership:

The Shire will be undertaking feasibility and detailed costings for this project with an accurate funding request available by June 2024.

Key components:

- Two additional basketball courts
- Additional car parking.

Advocacy alignment:

Population Growth

Education Training and Employment

Financial Capacity



Improving Road Safety in response to hypergrowth and Tonkin Highway extension

Improving our road safety

Opportunity: Improve local road safety

Request:

Up to \$159m for improvement and maintenance of our road network

Expected outcomes:

- Improve the safety of our local road network in anticipation of hypergrowth
- Reduce road crashes and fatalities
- Support tourism and investment within the Shire

From 2021 to 2036, the Shire of Serpentine Jarrahdale anticipates a substantial population surge, with a projected increase of 31,996 individuals, representing a growth rate of 96%. This translates to an average annual growth of 3.42% with dwellings increasing to 22,000 by 2036. The 25-29 year old age group is predicted to provide the highest proportion of people migrating to the Shire.

This substantial population growth means it is essential to enhance the current road network infrastructure to accommodate the anticipated increase in people and businesses relying on our road network.

Masterplanning:

Through careful analysis of the Shire's road network and Main Roads WA crash data, the Shire has identified 30 local roads that require urgent upgrades and improvements.

Our Road Upgrade Advocacy Plan lists the roads in priority order, their rationale for priority listing, the works and treatments required and the funding being sought.

No State or Federal Government grant funding is currently available to support the delivery of these urgent road upgrades.

Funding request for partnership:

The Shire is seeking up to \$159m in Federal and State Government funding to urgently action upgrades and improvements to our road network.

The first three priorities are roundabouts at major intersections which are at construction tender stage. These roundabouts were excluded from current scope of Kargotich Road works as part of the previous Federal State Government Hypergrowth Road funding.

Advocacy alignment:

Population Growth

Education Training and Employment

Financial Capacity



Hyper-Growth Road upgrade requests

— Hyper-growth Roads

PRIORITY NO.	ROAD NAME
1	Kargotich Road – Abernethy Road Roundabout
2	Kargotich Road – Orton Road Roundabout
3	Kargotich Road – Gossage Road Roundabout
4	Kargotich Road – North of Mundijong Road
5	Hopkinson Road
6	Karnup Road
7	Nicholson Road
8	Abernethy Road
9	Orton Road
10	Gossage Road
11	Kargotich Road – South of Mundijong Road
12	Nettleton Road
13	Kingsbury Drive
14	Turner Road
15	Utley Road
16	Norman Road
17	Hopeland Road
18	Lowlands Road
19	Wright Road
20	Rapids Road
21	Beenyup Road
22	Summerfield Road
23	Fisher Road
24	Walters Road
25	Yangedi Road South
26	Castle Road
27	Punrak Road
28	Elliot Road
29	Yanedi Road North
30	Henderson Road

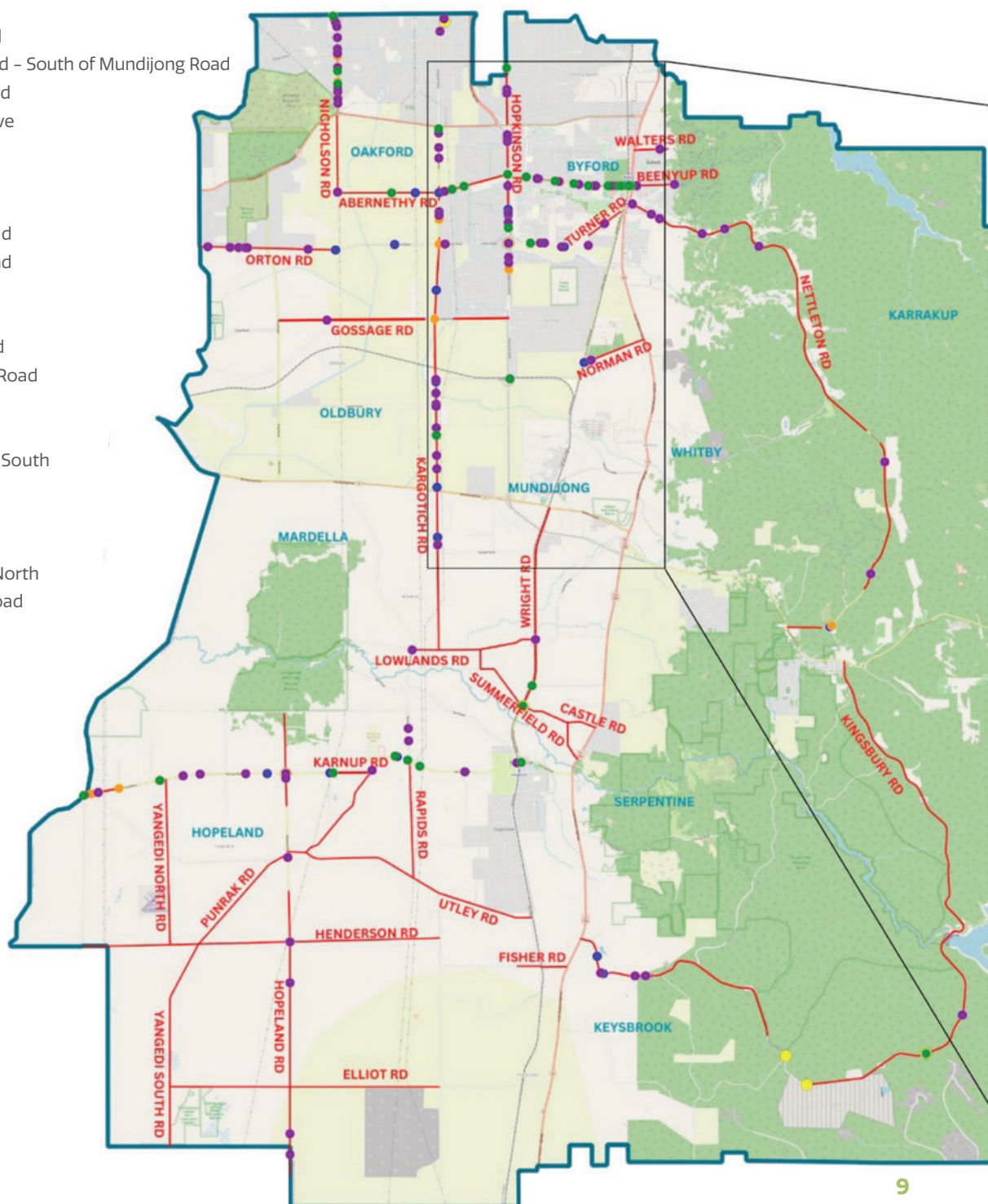
Road Crash Data 2018 – 2022

Legend

- Crash – Fatal
- Crash – Hospital
- Crash – Medical
- Crash – Major
- Crash – Minor

Road Crash Statistics

Total Crashes	619
Fatalities	14
Hospitalisations	60



Jarrahdale Trails Centre

Delivery of a high-quality tourism facility

Opportunity:

Develop Jarrahdale Trails Centre as a key tourism asset for the region

Expected outcomes:

- Provide high quality tourism facilities, visitor attractions and experiences
- Position Jarrahdale as a competitive globally recognised tourism destination
- Establish a place where the natural environment and cultural heritage support a sustainable visitor economy
- Support the economic development of Serpentine-Jarrahdale through catalyst investment in the subject site

Jarrahdale is a growing tourism destination within the Shire with an increase in the visitor economy identified as an important channel for economic development across the region. The construction of a Trails Centre will generate significant economic and social benefits, including a stronger sense of community through the preservation of heritage and improved vibrancy and activation of the Town Centre.

Masterplanning:

The Jarrahdale Trail Town Business Case and Implementation Plan is guiding the Shire to develop Jarrahdale as a fully accredited Trail Town, as sanctioned by Trails WA.

Trail Town accreditation will assist Jarrahdale to become renowned as one of Western Australia's primary trails destinations and Perth's most popular Trail Town for visitors seeking equestrian, bushwalking and heritage trail experiences.

Funding request for partnership:

The Shire is seeking Federal and State Government funding to implement priority recommendations in the Jarrahdale Trail Town Business Case, including the construction of the Trails Centre. Detailed feasibility and costings will be available by June 2024.

Key components:

- Implement priority recommendations outlined in the Jarrahdale Trail Town Business Case, including the construction of the Jarrahdale Trails Centre.
- Associated road upgrades.

Advocacy alignment:

Population Growth

Education Training and Employment

Financial Capacity







**Shire of
Serpentine
Jarrahdale**

6 Paterson Street Mundijong
Western Australia 6123
T: 9526 1111
E: info@sjshire.wa.gov.au
W: www.sjshire.wa.gov.au

This document is available
in alternate format on request
by phoning 9526 1111